

SERVING CLEOBURY COUNTRY

SEPTEMBER 2022

LONG DISTANCE MAN



Between July 25th and August 3rd, Chris Kippin walked from Bristol to Lands End, on public roads. He covered 233 miles and his average speed on simple Shanksey's Pony was 3.2 miles an hour. All to raise funds for our church tower and clock. Read more and maybe help his fund raising on Page 26.

THE MANOR HOUSE

What was once a very attractive building and garden on the High Street only seems to provoke questions about its sorry state these days. It is an eyesore that shames an attractive town.

The Save The Manor House Team seem to be following a rational and measured approach, keeping records and offering a well mannered way of asking question and putting forward suggestions about the building's future use and its long term restoration.

As with most local teams of concerned people who begin to express worries about a noted landmark in their area, the first response of authority showed no great concern for the matter. But by involving our County Councillors and now Philip Dunne, our Member of Parliament, there is weight behind the argument for action. We will happily carry their reports to keep everyone in the town informed.

THE BORDERS

CLASSIC BIKE SHOW

As editor, I cannot write about this fund raising event for our senior school without prejudice. I started the event in the mid 1980s and finally stepped down from organising after 30 or so shows. I never did count money, being more concerned at making our visitors happy, but the treasurer of the school Parent Teacher Association did suggest that 30 shows had raised something like £100,000 that was used for the pupils.

The PTA is the organising body today and with Tracy stepping down after doing a model job as a non-enthusiast who simply wanted to continue contributing to the school's success, she deserves praise for grasping the nettle and doing so well.

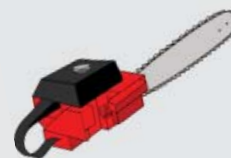
The show is well established and will continue to support the school if enough parents and teachers come forward to continue Tracy's work.



- Grass cutting
- Strimming
- hedge cutting
- garden and site clearance

N.R. Evans Landscaping

- Fencing, including:
- Panel fencing
- Post and rail fencing
- Picket fencing
- Stock fencing



domestic and commercial customers welcome

Call for a chat on 07535 902847

Email: nrevansgardenmaintenance@gmail.com Facebook: N.R.Evans Garden Maintenance



Victoria Allen Funeral Services

An Independent Family Business offering a
Personal and Professional Service

Over 25 years' Experience

Competitively Priced

Private Chapel of Rest

Golden Charter Pre-Paid Funeral Plans

Covering All Areas

Home Visits Available

01584 879035

24 Hour Service

8 Charlton Rise, Ludlow, Shropshire, SY8 1ND
www.vallenfuneralsludlow.co.uk
Email: vafs@btinternet.com



The Cleobury Clarion, September 2022
Volume Eighteen - Edition Six



*The local Severn Hospice support group handed over a cheque for £3,000.
See Page 11.*



*Some fine craftsmanship with oak in the Men's Shed for Kinlet Parish Council.
See Page 17.*

And On Other Pages....

- | | |
|-----------------------------------|---------------------------------|
| 5 - Farewell, Shoebox Jenny | 32/33 - Doddington Lodge |
| 7 - Ukraine Families in Cleobury | 37 - The Manor House |
| 9 - Cleobury Women's Institute | 39 - Cleobury Mortimer Benefice |
| 13 - Read Easy revived. | 41 - Simon Morton on Gardening |
| 15 - Stottesdon Parish Church | 43 - Terry Hendersen |
| 19 - Hidden Stories, Open Doors. | 45 - Mrs Grumpy |
| 21 - Stepping Out! Walking News | 47 - The Social Calendar |
| 23 - September in the Wyre Forest | 51 - West Mercia Police Team |
| 25 - Philip Dunne MP | 53 - The Cleobury Community Hub |
| 27 - Teme Wheels | 57 - Let's Beat the Scammers |
| 29 - The Long Distance Man | 61 - The Town Council Report |
| 31 - St John's Church, Doddington | 63 - Local Information |



**cleobury
wash house**

DRY CLEANING & LAUNDRY SERVICE
20 HIGH STREET, CLEOBURY MORTIMER
01299 270571
HOUSEHOLD & COMMERCIAL WORK WELCOME
FULLY ATTENDED, OPEN 7 DAYS

Self Service ~ Full Service Wash/ Dry/ Fold/ Ironing ~ Large Machine for Big Items
Service Washing for Duvets/ Blankets/ Sleeping Bags ~ Team Sports Kit Laundry Service
Equestrian Rug Cleaning ~ Laundry Service for Pet Items
Professional Shirt Service ~ Nikwax Wash & Proof for Outdoor Clothing

.... the place to air your dirty laundry!



RED HARE

45 HIGH STREET
CLEOBURY MORTIMER
WWW.REDHARESALON.CO.UK

01299 270702

YOUR
HAIR
IS
OUR
BEST
ADVERT

PPD FREE - PARABEN FREE - SULPHATE FREE - CRUELTY FREE

“Red Hare now offers a private hairdressing room. Perfect for those wanting more privacy, peace and quiet“



CLEOBURY CHIROPRACTIC

31 High St. Cleobury Mortimer DY14 8DQ

JS James
Smith
OSTEOPATHS

We offer both **CHIROPRACTIC** and **OSTEOPATHY**,
using gentle methods suitable for all ages.
Appointments available outside of normal working hours.
Both practitioners are fully registered, insured & regulated.

Sue Brown
MA MSc DC MMCA
CHIROPRACTOR

- * BACK PAIN * SCIATICA * POSTURAL PROBLEMS
- * JOINT PAIN * HEADACHES (arising from the neck)
- * Some SPORTS INJURIES

- PLUS** * COMPUTER (DSE) WORKSTATION ASSESSMENTS
* BACK CLASS – Weekly exercise class for those with back/neck pain.

iO
THE INSTITUTE
of OSTEOPATHY

Hands for Heroes
Free Chiropractic Care for War Veterans



01299 519351 / 07932 000028 / 07506 287191

www.notjustaboutbackpain.com

www.jsosteopaths.co.uk

GCC registered
General Chiropractic Council
www.gcc-uk.org


General
Osteopathic
Council
I'M REGISTERED
Registration no. 9254
www.osteopathy.org.uk

THE NEARLY DEAD POETS' SOCIETY

As ever, it was a happy gathering when six people of a poetic inclination gathered at the library on July 25th. Too late for this report to make it into the August CC. Pauline set the tone with the "Regrets" subject given short shrift; she got a round of applause and a request for an encore, a very rare occurrence.

Tony Smith, in from the distant land of Kidderminster, also kept us amused with his usual varied selection and David Walford illustrated his remarkable use of the English language in a quiet but powerful way.

The Society is open to all who enjoy the use of language and newcomers will find a glass of wine adds to the happy atmosphere. We meet at the library at 7.30 on the last Monday of the month. This month we will hear what members have managed to build around the word 'dusk'.

A VERY SILLY BIT

I cannot for the life of me remember just where I read

this, but I do know I went back a read it again in disbelief.

Richard Mille Watches are a company of distinction, with some very well off clients. As they will need to be if they want to truly be in the fashion of the moment. The company are offering a watch that carries the Ferrari name, priced at £1,570,000.

As a good friend of mine, blessed with common sense and a sense of humour, explained: "It's a Ferrari, therefore it goes faster."

VAL AND JANET IN THE AWARDS

Val Breakwell and Janet Ralston were both presented with Ten Year Royalty Voluntary awards recently, for their service in the Cleobury Friendship Club; in fact they've both served for twelve years, so this is a little catching up job. No formal ceremony in these Covid-nervous days, but both received certificates and badges through the post.

The Club meets in the Parish Hall every Tuesday, from 2.00 to 4.00pm to share chat, char and maybe cakes. The ever

enthusiastic Val Breakwell can tell you more on CM 270830

OUR SHOEBOXES

Jenny Vanderhook, long term organiser of the annual Shoebox Collection to help the less fortunate, bids the town farewell.

They say "Nothing Lasts Forever". How right that is, so things are having to change for our shoeboxes. I lost my husband earlier this year and I'm moving to Hampshire to be near my daughter. I've organised the shoeboxes for about 25 years and now Keith Balmer has agreed to take it on.

The leaflets will be in Saint Mary's from September and the usual boxes will be nearby waiting to be filled. I know a lot of you love doing your boxes, so do please carry on. I can't imagine not doing the boxes, but mine will be in Hampshire after this year.

Thank you all for your support over the years.

Jenny Vanderhook

SILLY BIT

I start a new job in Seoul next week. I thought it was a good Korea move.



The Oak Boy
TRADITIONAL OAK FRAMING
SINCE 2011
07398 233443

John Caswell
Johnjocaswell@yahoo.com

SERVICES AVAILABLE

- Flooring
- Manufacturing & fitting doors & windows
- Kitchens
- Cladding
- Studwork
- Bespoke Oak Framing
- Landscaping
- Patios
- Brick & Stone work
- Roofing, Tiling, Guttering
- General Building
- Property Maintenance

Call now for a Free Quotation!



CM BESPOKE CARE

Q Care Quality
Commission
Registered

S P C
Shropshire Partners In Care

Personal, Nursing and Domestic care.
Tailored to your needs.

Call for a free consultation

Tel: 01746 718816
Mobile: 07943834132

www.cmbcare.co.uk
www.facebook.com/cmbcare
email: cmbbespokecare@btconnect.com



07971 361901 or 01299 832484

Complete Bathroom Installations
Bathroom Refurbishment or Repairs
Wet Rooms
Professional Wall and Floor Tiling



For a quality and guaranteed service, call Stuart for a free quote
Highly Recommended / References available - see my reviews on www.freeindex.co.uk

FOR THE BATHROOM YOU DESERVE!

Flowers By Fiona *est 1991*

Fresh Flowers made to order
Special Occasions
Weddings, Anniversaries, Birthdays
Sympathy Tributes

19a High Street,
Cleobury Mortimer

Tel: 01299 272 995



Phoenix Environmental Ltd.
Contaminated Land Consulting and Contracting

Bringing 17 years of experience to bear, we provide straightforward advice help guide you through planning, or deal with your contaminated land, geotechnical and geo-environmental issues.

Phoenix Environmental offer both site and office-based services including:

- Regulatory Liaison and Planning Approval
- Phase 1 Desk Studies (Geology, Hydrogeology, Hydrology, History)
- Intrusive Investigation (Phase 2) Design and Application
- Trial Pitting, Cable Percussive Boreholes, Dynamic (Window) Sampling
- Flood Risk Advice
- Geotechnical Investigation/Advice, Foundation Advice
- Risk Assessment (GQRA/DQRA)
- Remediation Strategies/ Verification Reporting
- Environmental Audits/Site Audits
- Site Based engineering and supervision
- Drone Surveys/Media Production



We'll be there to guide you through every stage.
www.phoenixenviro.co.uk

Contact us: email. enquiries@phoenixenviro.co.uk Tel. 07800 646691

UKRAINIAN FAMILIES IN CLEOBURY

We are delighted to welcome a number of Ukrainian families as our guests in Cleobury and are happy that they are settling in well with their host families. Facilities are offered in the church on Thursday mornings to come to our Drop In sessions and also on a Thursday evening for the families to enjoy time together. Many cannot now come to the daytime sessions as they have found jobs and are working and our thanks go to all those who have offered help in so many different ways. We met with Philip Dunne our local MP on Tuesday 2nd August when he called at the Church to meet both hosts and Ukrainian families and offer his support and thanks for all that is being done locally. We were able to pass on to him our pride in the Community here in Cleobury and its unfailing response to need.

Liz Smith -

Co-Ordinator for Ukrainian Families in Cleobury

THE FRIENDS OF SAINT MARY'S

The Friends recently hosted

a 'Strawberry Tea' at Hopton Court. 50 guests were welcomed with a glass of Prosecco containing a strawberry together with a choice of blinis. They then sat down to a sumptuous repast which included sandwiches, sausage rolls, mini quiches, chicken goujons, scones, cakes and trifle, washed down with tea or coffee. For those who could not clear their plates, 'doggy bags' were provided and it is unlikely that anyone went home hungry. An auction of a painting of St Mary's raised £60 and there was also a successful raffle. Thanks go to the Ludford Duo who entertained us all by performing a number of pieces, both classical and modern, to everyone who helped with organisation and delivery and the Hopton Court team for providing the venue. Last but not least, thank you to all the guests for their support which resulted in a profit of just over £800. *Steve Todd*

AND LOOKING AHEAD WITH THE FRIENDS....

The Friends of St Mary's are holding a Quiz and Fish and Chip Supper at the Sports and Social Club, Love Lane, on Friday, October 21st. The club will open at 7.00 p.m. and it's heads down for the quiz at 7.30. Teams of four, inclusive of a fish & chip supper, price per head to be confirmed because of fluctuating fish prices. Tickets available from Diane Waddington on 01299 272820, or Steve Todd on 01299 271639 and other committee members.

Diane Waddington

LITTLE FERNS PLAYGROUP, FARLOW



Little Ferns playgroup meets at Farlow Village Hall every Wednesday in term time, from 10.00 - 12.00. There's lots of playing, snacks and the cost is £2 per family.

TDC CARPENTRY SERVICES

Fully insured qualified professional
Excellent workmanship and quality customer care
From hanging doors, fitting kitchens to bespoke projects

Tim Clare - 07890 519980

Professional. Affordable. Local.



Electrical Installations

No matter the size, we can gladly undertake all Domestic, Commercial and Industrial installations you require.

A family run business, with over 25 years industry experience.

From period properties to agricultural solutions, we provide a professional service every time. We also do call outs and emergency work.

Renewable Energy

Protect yourself from rising energy bills by considering renewable energy.

Solar PV is the most accessible way you can save energy by producing electricity from the sun. Earn a tax free income from the electricity your system produces.

Speak to us about how renewable energy can benefit you or your business.

Whatever your query, give us a call.

T: 07971 096267 / 08450 564173

W: www.awe-services.co.uk

Two Staks, Eagle Lane, Cleobury Mortimer, Worcs. DY14 8RA



URGENT REQUEST FOR A PIANIST FOR THE NEW NOTES CHOIR

It just seems such a shame when quite a number of folks enjoy a good sing for an afternoon but there are not so many people who are able or willing to play a piano. Notices and adverts go all round but very few have been keen to give it a go!

Following our last request in July someone was very keen to play a keyboard for us but unfortunately is unable to commit at present due to a family crisis. So please, if there is anyone out there who would like to be involved and play on Thursday afternoons 2.30 - 4 pm in the Community rooms in Cleo Hill contact Barbara 0780 1924935, bhall604@gmail.com for more details. Make it a worthwhile and stimulating afternoon for all!

Jane 01299 272892

CLEOBURY W.I.

Our August meeting was an historical walk around Cleobury, led by Dr Robert Hodge and followed by a relaxed cheese and wine supper in Judy's beautiful garden. Despite the heatwave, members

and guests had a thoroughly enjoyable evening.

September 16th will be one of the highlights of our centenary year. We will be celebrating with a tree planting in the commemorative garden at 2.30pm, then a special tea party, to include cutting the celebration cake, in the Market Hall. Hannah Cole has kindly agreed to provide background music by playing the harp during the afternoon. Several special guests have been invited, including key figures in the National and Shropshire Federations of WI as well as former presidents and longstanding supporters of Cleobury WI. All current members and any previous members of our branch of WI are welcome to join us, but we do request they let us know if they plan to attend to assist with catering. There might even be a glass of 'fizz' on offer. The special tablecloth that members have been busy making will be in use for the first time, and the commemorative tea towels will be available for purchase at £6.50 each.

Our regular meeting on 13th September is when Gabby Franklin, will be demonstrating how to make jam and chutney

using a microwave. September 28th will be another get-together at the Larch Barn at 2.30, for tea, cake and a natter.

For further information or to join WI, you are welcome to contact Clare on 01299 271905, Judy 01299 270983 or email judydysant10@gmail.com

Val Sniadowski

THE READING GROUP

A group of ten spent a delightful evening at the library, starting with a chat about Miss Pettigrew Lives For A Day. A charming, relaxing book in which the characters came to life. Immersing ourselves in the late 1930's we followed Miss Pettigrew, a lady with high morals, for 24 hours. So lovely to have a story with a beginning, middle and end, together with drawings. Consensus was, a book with a smile.

A good chin-wag followed, covering books and films, good and bad. After putting the world to right we distributed the forthcoming read, The Mercy Seat by Elizabeth H. Winthrop, set in Louisiana, 1943 with a more serious topic. We reconvene on September 19th.

Deana Kimber.



The Well Being

Holistic Therapies

Cleobury Mortimer DY14 8AS

www.thewellbeing.co.uk

April Boardman

Reiki Master ITEC MFHT Dip Hyp

Do you have aches & pains, ongoing health issues or just need to relax? Help is at hand!

Deep Tissue & Remedial Massage

Reiki & Crystal Healing


Hot Stone Massage-Aromatherapy- Reflexology

Pregnancy Massage & Hypnotherapy

20% off your 1st treatment!

Tel 01299 513148 or 07881494036 or Book Online!

People when thinking of having Home Care often ask who are your staff? What sort of company are they?

TLC are a family run care provider supporting people with Disabilities, Dementia, Aging Population and Acquired Brain Injury to remain living at home for as long as it is safe to do so. Clients when considering home care will often find it difficult to accept and wonder about who are the staff and what qualifications they have? I cannot speak for other companies, however in our company it is made up from many sectors of our society and when these are put together, we have an Outstanding Team. 

One of those sectors are the future NHS professional, we have Daisy who is in her last year of her training to be a midwife, Lucy who is working towards the end of her training to be a Physiotherapist. Christina and Aila about to start their journey into nursing. We have further staff who have just been accepted into the NHS. These lovely kind young adults not only study many hours both in university, on hospital wards, they also give to us and have helped us support our clients for many years! Most joined us while still at college.

TLC have ex-nurses that come to us after raising their family and some, in recent times have re-joined their colleagues in the NHS.

We have staff who have raised their kids and now want a career, TLC will train or retrain people to help people reach their full potential and become one of our Outstanding Team.

We encourage kind caring and honest people of all ages and backgrounds who want to make a difference to people's lives to join our team. TLC invest heavily in people with ongoing support and training to help our new colleagues achieve their goals and reach their full potential. Once initial training is complete and they have been assessed as competent, TLC Induction Manager and our Training Manager will support staff through to achieve their Level 2/3 in H&S Care

Our Training

TLC's Training Team offers full free training on site and support staff through their Care Certificate. We have strong connection with an outside Training Provision who help our staff to achieve their Level 2/3 in H&S Care. Currently we have 32 members of staff that have already achieved Level 2/3 in Health and Social Care. We have qualifications at level 4 and five of our Senior Managers have Level 5. All staff that are new to care are required to achieve Level 2 within the first two years of their employment.

Contact us

For further enquiries please regarding Care or employment please ring TLC Care at Home 01299 272897 for an informal chat. Visit www.tlccareathome.com or wecare@tlc-careathome.co.uk

*Unlock your Potential.
Success starts here!*

COVID-19 Update

All our staff are provided with full PPE's including Gloves, Full Aprons, Sleeves, Visors, Gloves Surgical Masks.

Video training on Donning and Doffing PPE's sent out regularly.

Staff sign health declarations daily, Staff have weekly Covid-19 test. Most of our staff have now been vaccinated against Covid-19. TLC work closely with government regulation and update our risks assessment accordingly.

THE SWIFT WATCH

Counting the number of swifts with us over the breeding season has always proved difficult. They fly at up to 60mph and dive and weave around the houses especially before going to bed at sunset. There is a real danger of counting the same athletic swift several times or missing some completely. Counting two adults per breeding nest and adding 1.5 fledgling per nest is another way of assessing numbers. Over the past 6 years the same methods have been used, so although there may be errors we do have a pretty good idea of fluctuations. The average over the last six years is 29 swifts leaving us at the end of July for Africa. This year's count was 27, so they do seem to be holding their own despite a chaotic and difficult breeding season.

The first six weeks of May and June were marked by poor feeding conditions. The second six weeks in June and July had some very hot weather which was good for feeding but heat stress and stroke were real problems, especially for this year's fledglings. At the time of their first flight from the nest they are well fed but overweight. They need to build up muscle power and flying skills and are especially susceptible to air temperatures over 28 C. Dramatic press reports of juvenile swifts

dropping from the sky was a reality this year. In most cases a short stop on the ground and a reasonable head wind to assist take off is all they require. The RSPB say not to pick them up and toss them into the air - a natural reaction but usually fatal for the stressed bird

Swifts, like most other birds and animals are all having to adapt to climate change. There are increasing reports of swifts remaining north of the equator in the eastern Mediterranean over winter. If our summers are going to give them heat stroke then presumably they will tend to move northwards to breed.

We look forward to seeing them again next year racing round our skies.

Kit Smith

FUND RAISING FOR SEVERN HOSPICE

The Stottesdon and Cleobury Mortimer support group for the Severn Hospice have had another successful year raising vital funds for the cause. The Gin Walk and the Craft Group got a special mention in the press release.

Last month a cheque for £3,000 was handed over at a gathering attended by Shaunah Murrell, Gaynor Woodland, Catherine Evans, Rosemary Abbiss and Madge Shinton, all joining together for this photo by Rosemary Thompson..



Congratulations to all those supporters who helped get a great result.

WEEKLY PLAYGROUP

Tiny Tots is the playgroup that meets every Friday, during term time, in Cleobury Mortimer Parish Hall.

All pre-school children are welcome to join us with their grown-up for playing, crafts, snack and singing. Tiny Tots has been running in Cleobury for many years and after a break during lockdown, we restarted in September 2021 and it's been wonderful to see the children playing together again and making new friends.

Each week we meet at 10.00. We have a wide selection of toys for the children to explore and enjoy. And there's always a cup of tea or coffee for the grown-ups so we can have a natter. £2 per family

Charlton Interiors

UPHOLSTERY & INTERIORS

Rosemary Jones

Mob: 07837 609229

Phone: 01584 861823

Email: info@charltoninteriors.com

www.charltoninteriors.com



BESPOKE YOGA TUITION



Relax Breathe Stretch Tone

One to one Yoga lessons

BWY trained teacher with over 15 years experience

Can travel to your home

Angela Kazimierczuk

07870 506655

CLEOBURY MORTIMER PARISH HALL

The largest hall in the area

We are open again so would you like to celebrate an event, party, wedding, or just a get together?

We are able to cater for small or large parties, sit down dinner parties for up to 100 people with or without a bar.

Come and have a look at what we can offer.

To book, call Janet on 01299 271070

'FLICKS IN THE STICKS'

7.30 Saturday September 24th

"The Duke"

The tale of Kempton Bunyon, his theft of a Goya from the National Gallery and his campaign for free television for the elderly

Starring Jim Broadbent and Helen Mirren

Licensed Bar. Admission £5.00

THE TOWN'S BEST VALUE

Do you know a 2, 3 or 4 year old who would like to join our fantastic nursery?



Stottesdon Gateway NURSERY
We really care and make learning fun

We can offer:

- A safe and nurturing learning environment with dedicated and caring staff.
- High quality provision with strong links to Reception.
- An amazing outdoor area and use of the school facilities and space.
- Nursery places for 2, 3, 4 year olds, available from September 2021
- From 15 - 30 funded hours available.
- BEFORE & AFTER SCHOOL & HOLIDAY PROVISION for children aged 2 - 11 years old.

Ofsted Outstanding Provider

TO BOOK A TOUR :

Stottesdon C of E Primary School

Stottesdon

Shropshire

DY14 8UE

TEL: 01746 718617

Nursery and Wrap-around sessions (term-time)		Fees
Early Start	7:30am - 8:00am	£4.00
Breakfast Club	8:00am - 8:45/9:00am	£4.00
Morning Session	9:00am - 11:30am	£10.00
Lunch club	11:30am - 12:30pm	£4.00
Afternoon Session	12:30am - 3:00pm	£10.00
After School Club	3:00pm - 5:30pm	£10.00

READ EASY

Steve Peckham, Team Leader of the Wyre Forest 'Read Easy' group, wrote to tell us that with new reading coaches trained and inducted they are ready to take in new recruits who want to learn how to read.

Did you see the BBC documentary a few months ago about Jay Blades, the Repair Shop host, learning to read at the age of 51?

Can you imagine how hard it must be to live in the modern world without being able to read? Letters, emails, texts, prescriptions, road signs, newspapers, magazines, instructions - all unfathomable. Reading a book to your children or grandchildren an experience closed off to you.

Jay learnt to read with the help of **Read Easy**. Your local group, Read Easy Wyre Forest covers the Cleobury area and provides free, confidential, one to one help to adults who want to learn to read. You work at your own pace with your own reading coach at a discreet venue.

Taking the first step to get help is the hardest one, but it can change the life of someone who doesn't read.

If you have a close relative or friend who doesn't read, tell them about Read Easy Wyre Forest and contact either Liz on 07895 847728 email wfcoordinator@readeasy.org.uk or Raine on 07800 860299 email wfcoordinator2@readeasy.org.uk for more information.

*Steve Peckham
Team/Leader/Chairman*

THE GREAT GLOBAL GREYHOUND WALK

In 2021, 7,509 Sighthounds (467 of those waiting to be adopted) walked in 343 Global Walks in 27 Countries.

The theme for this years event on Sunday 25th September is the colour **red** and people and their hounds are encouraged to dress up whilst participating in our local walk, aiming to promote greyhounds, and their sighthound cousins, as fantastic pets.

This year the Cleobury Mortimer Walk is meeting from 10.00 at the Wyre Forest Visitor Centre The walk will be guided by Jill Parker with her two rescue Greyhounds Sunny and JoJo. The walk is open to all Sighthounds and their companion dogs and of course their houndie owners.

It will be suitable for all abilities with plenty of rest points and is expected to last approximately 1 to 1.5 hrs. We will meet back at the Café for refreshments, a raffle and sale of Dog treats. All funds raised will be donated to Candy's Hound's Rescue International and Greyhound Protection UK.

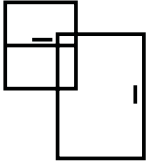
There is no charge to attend but, if possible, a donation to these two wonderful Greyhound rescues will be much appreciated.

Greyhounds are misunderstood by many - believed to be high maintenance and needing lots of exercise; nothing could be further from the truth - they are known as 40mph couch potatoes for good reason! Instantly recognisable with their sleek noble look, greyhounds have calm temperaments and gentle natures. Most are happy with just two twenty minute walks per day, but many are happy to do more. They are more adaptable than people realise and can suit many different lifestyles and family circumstances, some even living with small furry animals.

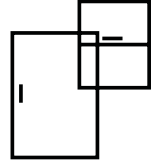
Kim Stanley
30, High Street
Cleobury Mortimer
Shropshire
DY14 8DQ

Tel. 01299 271800
www.kimstanley.co.uk

Est. 1995



Ashley Bannister Windows & Doors



- UPVC Windows & Doors
- Composite Doors
- Porches & Conservatories
- Glass Unit Replacement
- Fascia, Soffit & Guttering
- Handles & Letterboxes
- Hinges & Window Restrictors



No Job Too Big or Small
Certass Approved Installer
Local Tradesman Based in Highley

ashban94@hotmail.com
Ash: 07817 785245



Twit - Twoo Falconry

- **Static and flying displays with owls & falcons**
- **Fetes and fayres**
- **3 hour bird experiences based in clows top**
- **Garden parties and birthdays**
- **1-2 hour talks for indoor hall and outdoor visits**



**For quotes and bookings ring Steve Woodison 07738014884 or
Email scw1960@hotmail.co.uk**

MIKE AND SHELLEY ROBERTS

Haulage Contractors

Supplier of Aggregate and Asphalt products

12 Lacon Close, Cleobury Mortimer DY14 8EF

07860 669350

07966 045012

ROYAL BRITISH LEGION HARVEST AUCTION

It's a major social event for those who like to pick up a bargain, share a good laugh and maybe the odd sip of ale. It's the Royal British Legion's Harvest Auction, due to start at 7.30 on Friday, September 23rd with all proceeds going to the RBL local branch's welfare.

Jim Hulme, the established star of the show for a long time, is due to be wielding the gavel as auctioneer. Come along and bring your smile - it's a happy event.

STOTTESDON PARISH CHURCH

Chris Tibbitts reports on the "Past, Present and Future" Heritage Project.

With the bat survey work complete, we can report the (unsurprising, *to the church cleaning team at least*) 'news' that St Mary's actually does have "bats in the belfry" and in the porch and in the chancel roof. Ecologist Nick confirmed individual, non-breeding, 'day roosts' of common pipistrelle (1),

soprano pipistrells (<4) and 1 long-eared bat.

As there is no 'maternity colony' and as our bats are common species, the planned roof repairs are permitted under the terms of the Low Impact Licence which we have obtained from Natural England, and mitigation measures such as the provision of three new bat boxes (for five years). The design for the roof works will have to be modified slightly to incorporate bat-friendly gaps in ridge tiles and the external stone walls.

Elsewhere on the site, contractor Mike Gammon has had a team of two stripping-out the wooden floors and kitchen units at the west end - in the Baptistry and Coffee area.

We knew about the dry rot here but the invasive fungus turns out to be more extensive than earlier surveys suggested; so for now the area is 'out of bounds' to avoid spreading the spores, and for safety reasons (since there is now

no floor and the light switches are within the cordon!) we are limiting access to the building until the fungus is removed and the area treated. [*Anyone with essential church business can, of course, call us 01746 718007 to discuss their specific access needs*].

Apart from that, 'behind the scenes preparation' is almost complete for the main roofing and stonework repair contract to begin. The installation of the north side external scaffolding will be complete by the time you read this, and work to remove sections of the old roof is likely to have started just after the August Bank Holiday, with working hours between 08.30-16.00 (weekdays).

SILLY BITS

Patient in an Old Folks Homes: "I'm getting so old that my friends in Heaven will think I didn't pass the entrance test."

Same patient: "If I stand up too suddenly, I feel dizzy. My daughter has to smoke two joints for that."

Are you thinking about Equity Release?

- **Free** Advice
- **No negative equity guarantee**
 - **Pay off** existing debts
- **Help** your family when they need it most
 - **Boost** your retirement fund
 - **Stay** in the home you love
- Access to highly competitive **life insurance** policies
- Qualified **Will Writer** so call me to have your Will written

Call me now to find out more

Equity release will reduce the value of your estate and may effect your entitlement to means-tested benefits.

07966366505 | Stephanie@midasfp.com | www.midasfp.co.uk

Midas Financial Planning Services Ltd is authorised and Regulated by the Financial Conduct Authority



I'm Stephanie

**07966
366505**



Find Your Smile at Cleobury Dental Practice

Whether you're looking for dental implants to replace missing teeth, invisible braces for a straighter smile, boosting your confidence with teeth whitening or a dedicated dentist for your regular care, you can find it all here in the heart of historic Cleobury Mortimer.

- Modern, state of the art facilities and the latest dental technology
- Free car parking adjacent to the practice and step-free access to our dentists' surgeries
- Enjoy private dental care from just 47p per day with our membership plans
- Highly experienced in helping those with dental phobias

Services Provided

- Tooth-Coloured (White) Fillings
- Sedation for Anxious Patients
- Teeth Straightening with Braces and Invisalign
- Dental Implants (Replacement of Missing Teeth)
- Emergency Appointments Slots Available (first come first served)
- Hygienist Services
- Private and NHS Care (NHS subject to capacity)

Opening Hours

Mon, Tue, Wed and Fri **9am-5pm**
Thu **9am-7pm**
Saturdays **by appointment only**

Tel: 01299 271 747

www.cleoburydental.co.uk

BDA Good Practice
Member

 **invisalign**
PROVIDER

STOTTESDON'S WELCOMING APPLE DAY

Here's a good event to note in your diaries; the Stottesdon Apple Day on Sunday October 8th. An opportunity to learn how important apple crops have been in the past, with the smallest of developed types on show; apples you've never heard of, here to see and maybe sample. Wade Muggleton, famous for his knowledge, will be there to give answers and knowledge freely.

It's based on the Fighting Cocks pub, with displays of the many types, juice and cider making, apple recipes, apple cake and loads of activities for both children and their parents. If you have pear or apple trees in your garden, bring your fruit (windfalls too) with clean bottles and have fresh juice produced by the press that the community own. There's a £5 donation asked, to help maintain the milling and pressing equipment.

Admission to the event is free and the gates and doors will be open from 12.00 noon until 3.00.

KINLET'S NEW VILLAGE NOTICE BOARD

Top marks for a local initiative here, with Kinlet Parish Council asking the Cleobury Men's Shed if they could make a new notice board. With all that fine equipment and some skilled operators ready to show what can be done, it was the first commission the Shed had been given.



Shed committee chairman Pete Blackburn takes up the story:

"One of our members, a retired carpenter, has drawn up a simple and clever design, and is giving guidance to other members including trustee Guy James who are making it. A coincidental twist

to this story is another new member who happened to be from the Kinlet area, kindly donated some seasoned oak which we have cut down and used to make the solid english oak noticeboard. Oak is called 'ironwood' for good reason so we bought a more aggressive rip saw blade to do the cutting. Further recycling of left over ply donated by St Marys church (old pew tops) followed to make the back of the notice board. Surplus wood treatment in stock has meant the costs will be cork backing and the polycarbonate clear sheet to keep the weather out.

We expect to have it finished in August, resulting in a bit of fun, recycling of local materials, passing on new skills and hopefully a high quality new noticeboard for the community of Kinlet."

THOSE SPPED SIGNS

Apologies - we were wrong. Those signs about new SPPED LIMITS at the eastern end of town are still there, a sharp eyed observer advises (identity protected, in case the Highway Protection Squad are after him) One wonders, is an offence for speeding possible if done in a spped limit area?

Firewood

Seasoned logs, barn dried & ready to burn.

Free local delivery -01584 890993 or 07970878224

Various size loads available



Paul Harding Tree Services



John Brazier & Co

Accountants & Business Advisors

Accounts – Company, Partnership and Sole Trader
Tax Returns – Corporation Tax and Personal
VAT - Returns and advice
Payroll Service including RTI

For a personal and
professional service

Contact John Brazier or Sarah Morgan to discuss your requirements on 01299 271473 or email at info@johnbrazierco.co.uk. Alternatively, you can arrange a meeting at 53, High Street, Cleobury Mortimer, Worcestershire DY14 8DQ

01299 271 473



Bumperscuff Rescue

● Body Shop excellence ● Home convenience

Cost effective car body repairs!

- Bumper scuffs
- Paint scratches
- Kerbed alloy wheels
- Small dents

Free no obligation quotes, all work fully guaranteed Call **Andy Taylor** now on **07834 322216** or visit www.bumperscuffrescue.co.uk

CLEOBURY MORTIMER CARPETS

Supplying and Fitting of:-

- Carpets
- Natural floorings (Cair, Sisal & Seagrass)
- Vinyls

Carpets supplied by: Victoria Carpets, Fibre Flooring
& Alternative Flooring at Unbeatable Prices

Contact Details:-

Address: 26 High Street
Cleobury Mortimer •DY14 8BY
Telephone: H: 01299 270095
M: 07739 186163
Email: garethleach@aol.com
or check out our new website
www.cleoburymortimercarpets.co.uk

INFINITE ELECTRICAL SOLUTIONS

For all your electrical needs:

House rewires

Fuse board upgrades

Electric showers

Need an extra socket or light installed?

No job too small

For a FREE quote

Call Lloyd 01584 811184



HIDDEN STORIES, OPEN DOORS

A national conference which aims to unlock the potential of churches as visitor attractions at a time when more people are choosing to holiday nearer home, is taking place in Shropshire in October.

Under the title *Hidden Stories, Open Doors* it will feature guest speakers, including TV presenter and archaeologist, Jules Hudson, and a leading expert on pilgrimage and church trails. The conference will mark the end of a three-year Shropshire and Herefordshire-based project funded by the Heritage Fund. The Shrewsbury event will pass on lessons learned to churches across the country with the launch of the Church Tourism Resource Guide.

Because of Covid, the project never ran according to plan but lots has been learned and a number of innovative ideas have been tested, so the Conference will be a huge feedback session with seminars and workshops as well as the main speakers. The whole event will be much better if you are there.

Tuesday 11th October is the date, from 10am to 4.15pm and the place is just up the road

with the main venue being Shrewsbury Abbey. The neighbouring United Reformed Church will provide space for workshops, seminars and lunch.

Speakers include Professor Catherine Clarke, who is Director of the Centre for the History of People, Place and Community. She is the creator of the long distance walk, cycle or drive St Thomas Way pilgrim route from Swansea to Hereford. Pilgrimages and trails for people are her thing!

Raising awareness of churches in the rural landscape through the medium of television will be Jules Hudson, English archaeologist and television producer. He lives in Herefordshire, is a regular presenter on 'Escape to the Country' which features the nearest church in each of the places visited by the programme. He also presents on 'Countryfile'.

Promoting the potential of churches as sustainable community resources will be Becky Payne, who co-wrote the Crossing the Threshold Toolkit and the National Churches Trust Maintenance Booker.

There is a choice of six seminars/workshops later. Subjects such as: happy visitors make generous visitors; how to

put your church on the tourist map; telling your hidden stories; raising income from visitors; don't forget the churchyard; will be on offer all led by a range of people who know what they are talking about. The day ends with a question and answer session and includes time to meet other church tourism members.

<https://discoverchurches.org.uk/> is the website for more information.

The cost for the day is only £20 for Shropshire and Herefordshire Churches Tourism Group members and £40 for other delegates. It includes refreshments and lunch. Online: key-note speakers session is £10 and seminars are £5. It should be a good day out and a very convenient venue. I look forward to as many of you as possible coming along. Staycations are a trend set to grow in the next few years, so let's get our stunning Shropshire Churches up, running and very welcoming.

*Anni Holden Calver,
Secretary of Shropshire
Churches Tourism Group*



Grainger Jones your local financial adviser

Grainger lives in Cleobury Mortimer giving the residents and surrounding areas a dependable financial planning service.

- **Wealth Management**
- **Retirement Planning**
- **Investments & Savings**
- **Family & Business Protection**

An initial consultation is available at no charge

To book an appointment or just have a chat, please contact Grainger below.

tel: 07974 100089

email: grainger@meridenfp.co.uk

website: www.meridenfp.co.uk



What can a Nutritionist help with?

- Digestive issues
- Chronic Fatigue
- Sleeping issues
- Painful periods
- Menopause
- Migraine
- Type 2 Diabetes
- High Cholesterol
- Skin Conditions
- Children's Health
- Anxiety/Depression
- Vegan/vegetarian diets
- Weight Management
- plus many more

Visit www.eatyourselfbetter.co.uk to find out more or book a free mini consultation to see what I can do to help you. 07790521636



TURNERS GATES

bespoke sizes at standard prices



A small family run business specialising in quality wooden gates to suit all entrances.

Visit our website: www.turnersgates.co.uk

Drop us an email: turnersgates@outlook.com

Or give us a call on: 01299 270 965



TIME TO CLEAN YOUR OVEN? LET US DO THE JOB YOU HATE

AS SEEN
ON TV

- Ovens
- Grills
- Extractors
- Filters
- BBQs
- Microwaves
- Hobs
- Ranges
- AGAs

Call or go online today for your free estimate

OVENCLEAN
The original oven cleaning specialists

07913 123543
ovenclean.com



Stepping Out! Who's Walking, When and Where.

ROCK PATHFINDERS September's walks with this well organised and enthusiastic group:

Thursday the 1st at 10.30, gather at Brown Clee Hill Picnic Area, off the B4364 at Cleobury North. WV16 6TB.

Thursday the 15th. Start at 10.00, from Button Oak Inn, Button Oak, Bewdley. DY12 3AQ.

For more details, visit www.rockpathfinders.uk. Or ring Alan 01299 400304,

THE FOOTPATH ASSOCIATION

The last Walking for Health Awayday of 2022 is on September 14th. Starting at Blackstone Car Park we will walk along the bank of the River Severn to Bewdley and back. The walk is approximately two 10.00 Walking for Health miles with options for both a short or slower walk. The refreshment stop will be in Bewdley at the Museum Cafe. Please meet at the Love Lane Car Park for 10am departure. Car sharing will be available for people requiring

transport. If anyone wishes to make their own way please be there for 10.20am. The second walk for September is on the 28th starting at 10.00am outside the Market Hall as usual.

After the footpath clearance during July, repair work was back on the agenda for the work party in August. Repairs were made to the bridge over the stream near Cleanlyseat Farm and also to the steps leading from the bridge up Workhouse Bank. Even though it had rained heavily overnight a pickaxe was very useful as the ground is so hard. This is a very popular path and erosion on the steep bank could be a problem. Maintaining the steps ensures this section is safe for walkers, secures the ground and protects the surrounding vegetation.

CMFA members travelled to Hartlebury for their August walk. It was a six mile generally level circular walk finishing with lunch at a nearby pub. If anyone feels tempted to join one of the Social Walks they are open to

visitors and contact details can be found on our website.

On Sunday September 4th the Parish Walk is based on the CMFA leaflet walk 14, A Walk in Three Parishes. Join us for a couple of hours to enjoy a relaxing walk around Cleobury Mortimer. These walks are open to all, young, old, families, dogs..... If you are new to Cleobury this is a good way to get to know the countryside of this lovely part of the world.

Walking during the extreme heat of this Summer has not always been the most pleasant pastime. We sought out paths near the rivers and streams of the area. These routes together with the wonderful nearby Wyre Forest meant we could enjoy a hike with shade and cool water nearby. I expect in true British fashion as the weeks pass we will begin to hear complaints of the cold and wet weather!!!!

CMFA activities are on our website www.cmfa.co.uk and also on Facebook.

Veronica Hargreaves



WINDSOR PRICE REPAIR SHOP
Automotive

Email: mikeytwonames@icloud.com
Tel: 07468 521816

Unit 1, Hillocks Farm,
Cleobury Mortimer, DY14 0EB.

 MOT	 Brakes	 Diagnostic
 Services	 Cam Belts	 Exhausts
 Repairs	 Clutches	 Tyres

Mark Pearce

Landscape, Design and Rustic Garden Furniture

- Fencing
- Patios
- Drives
- Decking
- Garden Sheds
- Summer Houses
- Fence Panels
- Log Stores



And Much More

Top Quality Fully Treated Timber Products

Mobile: 07875425028

Tel: 01746718404

Robert Bradley Logs

07794 798616



*Seasoned Firewood, Hardwood,
Softwood or Mixed loads of logs.
Free Local Delivery*



Fresh milk and cream from
Cleobury Mortimer

www.mawleytownfarm.co.uk

01299 270359



SKELLERNS

DOORS & WINDOWS



- UPVC Fascias & Guttering
- UPVC Windows, Doors & Conservatories
- General Home Improvements
- Re-roofing & general building work
- Replacement Glass
- Patio Jet Washing



Free No-Obligation quote. FENSA registered company with years of experience

Call Mike on: 01886 812250 or mobile: 07814 577739

www.skellersndoorsandwindows.co.uk



The pools and streams of the forest are its lifelines. During this summer's droughts the water in them has dwindled to shockingly low levels and the water table has dropped so far that there has not been enough moisture in the soil to support all of the plant life which depends on it. Some of the little trees planted in recent winters have succumbed and even well-established trees have lost branches or even fallen entirely. Everywhere you can see premature signs of autumn: leaves changing colour and dropping. It has been noticeable too that some plants have stopped flowering early to conserve moisture and that many forest rides have recently been empty of the butterflies which should have been feeding on bramble flowers.

Fortunately the farm pond has hung on, though with a much-reduced level and some very green water! The water boatmen were as numerous and active as ever, hunting their prey from under the air-water interface and hanging upside down to breathe air through their abdomens.

Dragonflies have been frequent visitors. There are two species that visit to hunt smaller flying prey and court their mates. The earliest to appear in the summer is the Broad-bodied libellula: the male with a broad blue abdomen, the female brown. The larger and faster Southern Hawker dragonfly is often a slightly later arrival but one which one can't fail to notice. The male has a beautiful green and blue body, and will charge up and down the pond with wings going full tilt. If another male or another species is around there will be

an aerial altercation. The female's arrival will bring the male immediately to join her in flight. During mating (usually on a handy lily leaf) the male grasps the female with his tail just behind her head, and they will often fly off joined in that way while the female dips her tail in the water to lay her eggs on water plants.



The Southern Hawker dragonfly male .

Photo by Nigel Stone.

The season could bring a good crop of mushrooms and toadstools. I say this because a period of heavy rain after dry weather usually stimulates the growth of the variously-shaped and coloured fruiting bodies which we see on the forest floor and out in the meadows. The greater part of the organism consists of a network of fungal threads called hyphae growing through the soil, dead wood and leaves (and often visible if you turn over a rotting log or clump of dead leaves). It remains to be seen whether the prolonged drought has had a detrimental effect on their growth but the fungi, like the rest of the natural world, are remarkably tenacious and will recover quickly if conditions are right.

Linda Iles

BILL'S QUALITY METALWORK
5 GREENFIELD ROAD, CRAVEN ARMS, SY7 9QU
Manufacturing Made to Measure Gates and Railings
~Balconies and Staircases, Handrails, Carports,
Structural Steelwork and Mobile Welding Service.
Phone Bill on 07973 248 016 or 01588 673 914
Office for a free quote



Heath Farm Meats, Bagginswood

Opening Hours

Wed 8am to 5.30pm, Thurs 8am to 7pm, Fri 8am to 5.30pm, Sat 8am to 12.30pm

Straight from Our Farm to Table

We rear & sell all our own beef, pork, lamb & mutton through our shop on farm. We also make our own flavoured sausages, burgers, home cured bacon, gammon etc. No order to large or small.

Hams ● All Poultry ● Honey ● Mawley Milk & Cream ● Ashley's Cakes & Bread ● Jams ● Eggs ● Cheeses ● Apple Juice ● Potatoes ● Meat Pies ● Sticks & Logs

Telephone 01746 718732 with your order to arrange a date & time for collection



Electrical & Security

Tel: 07973 112463 (Anytime)

01299 489223



- Full/ Part Installations
 - Existing System Updates
 - Alarm & Security Systems
 - PAT Testing
 - Domestic and Commercial Properties
 - Electrical Problems
 - Landlords & Electrical Safety Certification
 - Upgrades
 - Free Callouts and Quotes
 - For Existing and New Installations and Security.
- Part P + Full Scope Registration
Card Payments Accepted



Fast Friendly Service, No Job Too Small



FOR ALL YOUR ACCOUNTANCY REQUIREMENTS

www.fairway-accountants.co.uk

Head Office: 01299 822283
team@fairway-net.co.uk

Simon Hector: 07896 439594
sjh@fairway-net.co.uk



Philip Dunne's Letter from Westminster

A Great British Summer in South Shropshire

The summer has seen South Shropshire at its best, but also at its hottest on record. As I write we still await rain in August after a virtually dry July.

The last hot summer which comes anywhere close was 1976, which I remember as the summer of my A-Levels, attempting to revise while lying in the sun. Not a good combination.

But this summer I have enjoyed getting back out around the constituency, attending local events, visiting businesses large and small and speaking to constituents across our market towns and villages.

After two summers with events postponed and so many business and community staples of the area forced to close, it has given us all the opportunity to appreciate what great things go on within our communities.

I have been busy during the Parliamentary Recess, not least focussing on NHS and social care pressures.

I also arranged a Conservative Leadership candidate meeting at Ludlow Racecourse attended by 400 members.

But it has also been great to attend some favourite South Shropshire events, including the Burwarton Show, which as usual showed the best of our county's rural economy and agricultural skills.

I co-chaired a meeting with Severn Trent Water to help progress their plans to help the River Teme achieve water bathing quality status around Ludlow

within the next few years. I have campaigned strongly to improve our waterways and am encouraged by the pilot scheme launched by Severn Trent here in South Shropshire.

I have met some wonderful new charities, including the Men's Shed in Cleobury Mortimer who support men who enjoy coming together through DIY, and Severn Valley Rescue which provides therapy through caring for rescue animals. I have also been meeting local groups hosting Ukrainian refugees around South Shropshire.

The Bishops Castle Food Bank is another excellent example of our community supporting people at what is a difficult time of rising energy costs and shopping bills.

I have resumed my regular surgeries around the constituency during the summer and have been following up on the casework my team and I have been working on, chasing responses.

I am pleased that my hardworking team are taking well-deserved breaks before we return to Parliament next week, where we shall be met by a new Prime Minister.

As ever, I welcome news and updates from around the constituency and try to attend local events whenever I can.

Enjoy the sunshine if we get an Indian summer, but if not, we know we also need some decent rain!

Philip Dunne

Do you suffer from heat loss, outside noise or draughty windows like many older properties?

**Bespoke
Secondary
Glazing**

Secondary glazing from Lansec greatly reduces draughts and heat loss while retaining the traditional appearance of your original windows

- **Recommended** by Historic England for heritage and Grade 2 listed buildings
- **Barely visible** from inside or outside
- **Colour matched** to your existing windows
- **10 year** material and labour guarantee
- **Local**, family run business



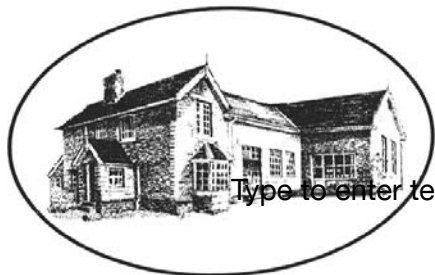
01299 544013
lansecglz.co.uk

Unit 4 Blackmanstitch, Long Bank, Bewdley, Worcs DY12 2QW



Bayton Church of England Primary School

- Be the best you can be, as a child of God -



Type to enter text

www.baytonceprimary.co.uk
01299 832393
office@baytonpri.worcs.sch.uk

Call or email to book an appointment to visit our school and meet our staff.

"We offer an alternative and unique Primary School experience, in an idyllic rural setting. A small family-orientated school with a caring ethos and traditional values, coupled with excellent results. If you want the very best for your child, come and visit us."

*Ms. Jolanda Simmonds
Head Teacher*

**Spaces currently in Years 4, 5 & 6, and we are also welcoming Parents & Carers of September 2019 intake.
Governor vacancies – please call for information**

Rated "Outstanding" in our latest SIAMs inspection (March 2018).

Friendship – Hope – Perseverance – Compassion – Trust – Forgiveness – Responsibility – Respect – Truthfulness

Our school vision: We aim for everyone to be a part of our community, be life-long learners who are confident, enthusiastic, valued and reach their God given full potential.



A LIBERAL DEMOCRAT VIEW

A long time ago I bought my first house, near Cleobury Mortimer. I was in my second year of teaching and I had saved up the modest deposit in a year. The cottage cost exactly 2 ½ times my annual salary. Coincidentally, the same cottage, albeit with some improvements, came on the market recently for £235,000. A starting salary for a teacher in this area is now around £26,000 so the ratio is now 9 times annual salary.

In 1960, the average first-time buyer was just 23 years old, paying a deposit of £595 on their first home, the equivalent of £12,738 today. Now the average age of a first-time buyer is 33. So what is driving the change? Inflation, of course, but other factors are too:

1) Housing Supply. Despite optimistic forecasts the government and builders have not met their targets. Fewer houses means more competition, driving prices higher.

2) Buy to let. The scheme, begun in 1996, gave generous allowances for intending landlords, many of whom created portfolios of multiple properties. In 2015 measures to make the scheme less attractive were introduced but the number of properties continues to rise: 8.7 million is the latest figure.

3) Foreign ownership. London, the place that drives the UK market, in 2021 had £59.3 billion pounds of housing owned by foreigners.

4) The right to buy. The scheme, introduced in 1980, was very popular with council house tenants but, because councils were not permitted to reinvest the receipts in new stock, this sector has shrunk from 6 ½ million homes in 1980 to 2 million today.

5) Population expansion. Since 1960 the UK population has increased from around 52 million to nearly 68 million.

Though we long-term homeowners could congratulate ourselves on sitting on an increasing asset, it is no consolation to our children and grandchildren, who will find it more difficult to get on the housing ladder.

The housing crisis, I believe, is one consequence of short-term planning by governments. In my view, this and other problems (the NHS springs to mind) will only be resolved with a change to the voting system. But that's a topic for another article.

David Gaukroger – Chairman, Ludlow Liberal Democrats. gaukrogerdavid1@gmail.com

TEME WHEELS

Teme Wheels is a registered charity, celebrating its first year as a community transport organisation in the Teme Valley and borderlands area with a range of services including transport to hospitals and other medical appointments, shopping, hairdressers, social activities and personal business.

Teme Wheels has an electric vehicle, fully wheelchair accessible and has already been in regular use around the area. Wheelchair bound passengers can be transported without having to move from their wheelchairs, making their trip much more comfortable.

From June we've introduced a weekly service to Cleobury Mortimer from Tenbury Wells, through Newnham Bridge, Mamble, Clows Top, Badgers Walk, Bayton and on to Cleobury. It departs Tenbury Wells at 0930 each Wednesday and arrives in Cleobury Mortimer around 1020. Cleobury residents can use the service when it departs for Tenbury at 10.30am. Being a community transport service times are approximate and flexible.

More details Monday – Friday from 0900 to 1300. on 01584 233131. We are happy to help.

No.19
The Beauty Room
with Jane Weaver

Wash away the aches, pains and stress of everyday life by indulging in a relaxing Swedish massage, any combination of back, shoulder, neck, arms and legs, ½, ¾, 1 or 1½ hrs, or treat yourself to a manicure/pedicure, waxing or tinting.

Telephone consultations available to discuss any personal requirements, treatments available at No.19 or in your own home. Contact Jane on 07968 582269 or email 19thebeautyroom@gmail.com

Just like the lotus flower we too have the ability to rise from the mud, bloom out of the darkness and radiate into the world!



Soft furnishing and
Interior Design Services

Masquerade
Fabrics Limited

01299 271 680
36 High Street Cleobury Mortimer near Kidderminster
Worcestershire DY14 8DQ

Retailers for Sanderson, Harlequin, Monkwel
Crowson and many more...

Comprehensive design, measuring and fitting service.





The Lamp Restaurant

15a High Street, Cleobury Mortimer, Shropshire, DY14 8DG

01299 272785 or 01299 271313

Fully Licenced and Air Conditioned

Serving Bangladeshi & Indian Cuisine



The Lamp Restaurant winner of Currylife award chef of the Year

Open 7 days a week from 6.00pm until 11.00pm

The Lamp's cuisine, inspired by Sylhet, the second city of Bangladesh, offers a wide variety of choice along with established favourite dishes and a selection of Chef's Specials.

The wide variety of starters and accompaniments chosen by our chef to complement your main course.

Takeaway service offers free delivery up to 3 miles for orders over £15.00.

Find us on Facebook: Lamp Inn Cleobury Mortimer



Michael Coombes Roofing & Building Maintenance.

Complete Re-roofing, Roof repairs, Pointing & Chimney repairs.

Slabbing & Brick work

Wall & Floor Tiling

Painting & Decorating

Over 20 Years experience in the Cleobury area.

Call Michael on 07854 047413

APSupplies

- ◆ Specialists in equestrian and field maintenance
- ◆ Haylage, hay and straw supplied
- ◆ From chain harrowing to mowing and baling
- ◆ Fencing to ménage maintenance
- ◆ Woodland management and coppicing
- ◆ Concrete pads and sheds all at competitive rates



APSupplies.....Call today for a chat !

Ant Harman: 07779239393

Chris Kippin's Remarkable Week (and a bit) Walk



Made it! 233miles and still smiling. All to help restore the Saint Mary's church tower and both its ancient clock and supporting framework.

Chris Kippin is one of those modest men who talk quietly, act positively and get very good results. There's something of the whippet in his appearance, slim and easy moving, used to covering distances on foot or bicycle. Damned fit, that's for sure.

His latest fund raising effort, in support of the restoration and repair work on the church tower, clock, and supporting frame, took him from Bristol to Land's End. 233 miles in eleven days, all on foot with just a backpack to carry his needs. No support team, one pair of decent shoes and a fair knowledge of his route to cover 233 miles. He's meticulous in his record keeping, logging 72 and a half hours of walking time, which gives an average speed of just over three miles an hour.

So was his route on normal roads, or more picturesque country footpaths? Simply normal roads, with or without footpaths. "I definitely needed to watch my step," he explains. "The rule for walking on roads is to keep to the right, facing oncoming traffic, and to always walk on the outside of curves and corners." He's a member of the Long Distance Walkers' Association and once did the journey from central London to Oxford overnight; that would have tested his safe walking skills, not to

mention eyesight and stamina. He's dismissive of such a walk compared with those who did the same trek long ago in 1737.

He was fortunate in the weather, scheduling a period that fell between the two extremely hot spells we saw in the high summer. July 25th to August 3rd was a good choice, stopping at bed and breakfast places of varying quality, including one that didn't serve an evening meal.

He bought a new pair of boots and a waterproof poncho that would protect him and backpack if it really turned wet. It didn't; there was rain on the first morning and just one period of wetness for the rest of the journey. He did develop a blister on one foot and dressed the offender with fresh plasters every day. Retiree hurt? The man is clearly made of sterner stuff.

He is also a very interesting man to talk to. He explains that work on the tower could not start until tests had been made to confirm the floor was strong enough to support the staircase that will provide easy access for bell-ringers and any engineer needing to work on the clock. As secretary of the Parochial Church Council and joint Tower Captain of the bell-ringers, he knows what needs to be done and how much it is likely to cost to keep this central landmark in our community in good working order. Even if you're not a churchgoer, it's good for the town's reputation that such an historic building is watched over by people prepared to give time and effort to keep it in good working order.

A good example of Chris's friendly manner is this letter sent out to those who pledged support:

"Thank you for agreeing to sponsor me in aid of our tower project (clock restoration, staircase installation and bell frame painting), St Mary's Church is very grateful for your support. The best way for you to send me your sponsorship is by bank transfer to my personal account:

Sort code 56-00-13

Account number: 22573429

Account name: Robert C Kippin

Some of you may already have these bank details from my previous sponsored cycle rides.

I will then remit money to our church treasurer in larger amounts periodically, which saves her having to account for lots of payments.

If it's more convenient for you to send me a cheque, which will be necessary if you're using a CAF account or similar, my address is The Old Telephone Exchange, The Hurst, Cleobury

Mortimer, Shropshire, DY14 8EG.

Thank you again for your generosity.

Chris."



Purrfect Cattery

Comfortable and spacious pens for single or double occupancy
fully licenced by Shropshire Council

visit our website: www.purrfectcattery.co.uk

Contact us on: 01299 270565 or mobile: 07968 111415

Or email: enquiries@purrfectcattery.co.uk

TIRED OF THE SAME OLD BEER?

We've all been there, you've just got home and there is no beer in the fridge. You contemplate popping to the nearest shop* and then you remember all they stock is Fosters, Carlsberg and some manky looking white cider that hasn't even seen an apple.

Don't worry, we are here for you!

The UK's freshest craft beer subscription service is now live, delivering amazing beer from the UK's best independent breweries to your door. You can choose to join the club and get a case of hand selected beers once a month or just buy the one case as a one-off.

BECAUSE Life is too short for Sh*t Beer

*Please note this is not implying any of your local shops have a poor range of beer. Its is a generic statement used for marketing purposes. I imagine your shop probably has nice beer.



Take your fancy smart phone out and scan this QR code. The magic of the internet will unfold right in front of your eyes. Here you can register for more updates, discount codes and ace competitions.



**SAINT JOHN'S
DODDINGTON**

We have begun to organise an event for each month and in September, we are holding two! On Saturday September, 10th, come and cheer us on as we take part in Ride and Stride. Our church will be open for visitors from churches all over Shropshire as they get sponsored to visit as many churches as they can in the day, but we are staying closer to home and using our new path to raise sponsorship by travelling its length in a variety of ways. We're hoping to include all ages, with joggers, jugglers, dancers... and the Churchwarden will be going "3 steps forward, 2 steps back" as many times as she can in an hour! There'll be refreshments all day for visitors, participants and cheerers-on. If you would like to join us, take part, or sponsor someone, let us know so we can give you more details, but you can just turn up on the day and see what is happening when you arrive.

Our annual Harvest Service and tea will be on Sunday September 25th and we have a special speaker joining us from Caring for God's Acre (CfGA) to talk about their work and the importance of churchyards for wildlife; St John's has been chosen as one of the churchyards for their Opening the Ark project over the coming months, so do come to hear more about CfGA and what makes our churchyards special. The 3.00pm service will be followed as usual by a tea at the Village Hall with Auction of Produce, this year in aid of the local Foodbank. Our other service this month is on 4th

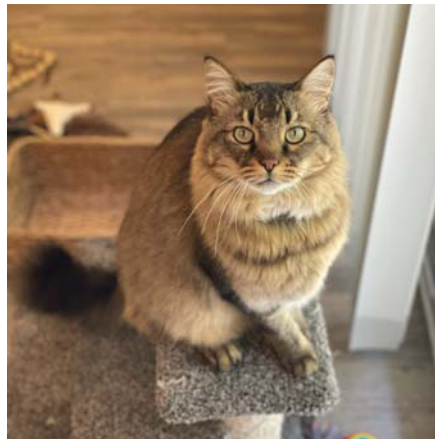
September at 11am - all welcome. For up to date news follow us on Facebook: @StJohnsDoddington, or check our website: : www.achurchnearyou.com/church/10505/ Email: stjohnsdoddington@gmail.com Celia Gibb 01584 318036

TEA SENSE

"In order to be remembered, leave nothing behind but love." Anon, but seen in a mint teabag advert in America.

Also from America: "Women are like teabags; you never know how strong they are until they're put in hot water." Attributed to Eleanor Roosevelt.

**LOST CAT - REWARD
OFFERED**



This is Charlie Cat, a Maine Coon Brown Tabby who needs his prescription food for Kidney Crystals as soon as possible. He was last seen on August 4th in Cleobury, where his address is DY14 0ND. He may have travelled in a delivery vehicle.

If you've seen him or have any news about his whereabouts, please contact Erica Lamont on 07379 082232 arrika@gmail.com or call Animal Tracker on 01279 219777 and quote referenced 34897.

A reward for Charlie's recovery is offered.

**FLICKS IN THE
STICKS - EARLY
NOTICE OF WHAT'S
COMING**

24 September - The Duke

In 1961, Kempton Bunton, a 60-year-old taxi driver, stole Goya's portrait of the Duke of Wellington from the National Gallery in London. It was the first (and remains the only) theft in the Gallery's history. Kempton sent ransom notes saying that he would return the painting on condition that the government invested more in care for the elderly - he had long campaigned for pensioners to receive free television. What happened next became the stuff of legend. Only 50 years later did the full story emerge - Kempton had spun a web of lies. The only truth was that he was a good man, determined to change the world and save his marriage - how and why he used the Duke to achieve that is a wonderfully uplifting tale, starring Helen Mirren and Jim Broadbent

Saturday 15 October - Elvis

From Oscar-nominated visionary filmmaker Baz Luhrmann comes Warner Bros. Pictures' drama *Elvis*, starring Austin Butler and Oscar winner Tom Hanks. The film explores the life and music of Elvis Presley (Butler), seen through the prism of his complicated relationship with his enigmatic manager, Colonel Tom Parker (Hanks). The story delves into the complex dynamic between Presley and Parker spanning over 20 years, from Presley's rise to fame to his stardom, against the backdrop of the evolving cultural landscape.



Doddington Lodge
Residential Care Home

Living with us

at Doddington Lodge

Care and Warmth at its Heart

We would like to welcome you and your family to Doddington Lodge, our newly renovated, privately owned residential and dementia care home in the historic, tranquil hamlet of Doddington, Nr Cleobury Mortimer. Located on the beautiful Shropshire & Shropshire border, providing stunning views from every aspect of our home.

We have a modern bistro dining room and bar with a delicious daily menu created by our accomplished chefs. Individually designed spacious double rooms, perfect for couples to stay together or beautiful single rooms, all with en-suites and stunning countryside views. Even a hairdressing salon for a little pampering to provide a place of well-being.

Doddington Lodge is a place where friendships are made and special moments are shared. We organise many fun activities that everyone can get involved with, whether that's a sing along, arts and crafts, collecting fresh veg from the allotment or just simply helping each other with a crossword in our daily newspaper. Each day is different, we certainly have many happy moments...

Our home is a loving community and family, where you can consider Doddington Lodge a home away from home. We will provide you with all the key information, guiding you through every step of the process, whether you are staying with us for a short or long stay.



Royal Ascot Ladies Day comes to Doddington Lodge



A very special visit from DML Racing, Worcester



"There is such a lovely atmosphere & many friendships made. Every step is taken to make each day enjoyable and for everyone to get involved with the activities."

Join our team

and make a real difference...

Becoming part of the Doddington Lodge family is really something special. Our team is built on a shared purpose, to provide outstanding care for our residents and support for loved ones. We invest in our team members, helping them progress and develop within their roles and career path. More than ever we are looking for the right individuals who can really make a difference. If you believe you have the right skills please email your CV to: enquiries@doddingtonlodge.com or visit www.doddingtonlodge.co.uk/careers.

Current Vacancies

- CHEF/COOK
- SENIOR CARERS
- CARE ASSISTANTS
- NIGHT CARERS

To apply please send your CV to enquiries@doddingtonlodge.com



"I began working at Doddington Lodge over two years ago & what an amazing place to work, a beautiful home with great carers and management, lots of investment has gone into making it into such a wonderful place. Doddington is like my family and I will be forever grateful for having an opportunity to work here x."
Georgie - Deputy Manager

www.doddingtonlodge.com | E: enquiries@doddingtonlodge.com | T: 01584 707084

Doddington Lodge, Residential Care Home, Doddington, Nr Cleobury Mortimer, Shropshire DY14 0HJ.



Remember to follow us



A SPECIAL VISIT FROM FREDDIE & ARIA

We've been incredibly busy this month, enjoying the sunshine and lots of activities. It was a lovely day for our residents when our little helpers, Freddie and Aria came to visit and spent time playing bingo and colouring. Each day is so different at Doddington Lodge, all the activities are thought out carefully to make sure everyone is enjoying their day as much as possible! Everything from cooking, gardening, walking, dancing, singing, and enjoying the sunshine in the Doddington Lodge gardens. There is truly something for everyone! Thank you, Rachel & Rachel, for a wonderful month of activities.



MONEY RAISED PRESENTED TO CLEOBURY MORTIMER & DISTRICT FIRST RESPONDERS

We are very proud to have been able to present Liz Vanegas de Quickenden with a cheque for £370 for the Cleobury Mortimer & District Community First Responders. We would like to thank everyone that took part and came along to our Village Country Fair to help raise money for such worthy causes.



★ TEAM SPOTLIGHT ★ *Zsanett*

We would like to welcome Zsanett, who has recently joined the Doddington Lodge Team. Born in Hungary, Zsanett is 22 years old and now lives locally in Kidderminster with her partner.

She's passionate about cooking, baking, reading, and going on road trip adventures. Zsanett is currently studying Business and Management part-time as well as working full-time at Doddington Lodge. She's a busy girl!

"I'm really enjoying working at Doddington Lodge, the residents are so lovely and are being really patient with me as I have just started my role. They make me laugh and their smile after caring for them is the biggest reward."

We are so thrilled to have Zsanett on board, as a new member of the Doddington Lodge Team.

www.doddingtonlodge.com | E: enquiries@doddingtonlodge.com | T: 01584 707084

CARTER'S ANTIQUES



We are looking to purchase all manner of antiques, jewellery, coins, medals and curiosities.

For a free valuations kindly telephone

John Carter: 07779 311792

Or email: johnbarney743@gmail.com

SINGING LESSONS

Professional singer and experienced teacher recently moved to this area
Vacancies available

All styles, ages, standards welcome
Contact Angela Kazimierczuk on
07870 506655



Natalie Taylor Dip CFHP MPS Pract.

Specialist Foot Health Practitioner

Specialising in:-

- In-growing toenails
- Fungal infections
- Nail trimming
- Verrucae
- Calluses
- Corns

All from the comfort of your own home.

If you would like to make an appointment, please call on **07779 113982** or **01584 890112**



COUNTRY SKILLS

CPCS/NPTC Approved—fully insured

- Outside Renovation
- Tree Surgery, Hard Landscaping
- Slabbing and Fencing
- Decking, Roofing
- Contract Mowing

Call for a free quotation

R. Price & Sons

Mobile: 07967 140720 Email: roger@country-skills.co.uk

Painter/Decorator Christine Smith

Friendly, local, female professional. Any job considered: including Indoor/outdoor, walls, windows and doors, wallpaper & preparation. DBS checked. Fairly priced. Free quotes.

Call: 07977296335

E: clsartcontact@gmail.com



Precious Memories

Funeral Celebrant - Carole Clayton

07971 543790— 01584 890007

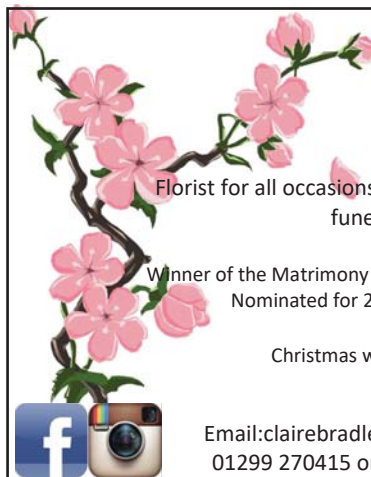
South Shropshire - North Herefordshire - North Worcestershire

Celebrant@preciousmemoriescelebrant.net

www.preciousmemoriescelebrant.net

FB: @preciousmemoriescelebrant

Everyone has a story to tell—I'd be honoured to be the one to tell the story of your Loved One.



Claire Bradley
Floral Designs

Florist for all occasions, specialising in wedding and funeral flowers

Winner of the Matrimony Award 2020 Best Wedding Florist
Nominated for 2021 Matrimony Awards

Christmas workshops available



Email: clairebradley1@icloud.com
01299 270415 or 07980 580770



Domestic oil-fired boiler breakdown & maintenance services.

27 years' field-service experience with leading UK boiler manufacturer Worcester Bosch.

Donovan Taylor

Tel: 01299 828670 or 07807 837040

donovan.taylor@sky.com

www.greenstar-boiler-repairs.com

Caring about your environment and providing an honest, professional & reliable service you can trust



A small local business.

I am a qualified lawyer with over 30 years experience offering a personal and approachable service.

I undertake specialist will drafting, lasting powers of attorney, deputyship applications and probate.

"I've used Mandy at Westons Wills and Probate numerous times over recent years covering all aspects of her expertise. Her guidance on the way forward and solutions to issues that she has suggested has been excellent. She is extremely communicative and responsive, and handles difficult situations with compassion and empathy. I have happily and confidently recommended her services to everyone I know that would benefit from her services."

"Mandy Weston of Westons Wills and Probate is a very professional and knowledgeable person. She has now become my 'go to' legal adviser and has taken on many legal tasks for me and my family. Wills, Probate, Inheritance Tax and Powers of Attorney. I trust her judgement and experience to act in mine and my family's best interest. I would highly recommend her legal services to anyone."



Contact me today

"Great expertise and a friendly professional manner"



Contact Mandy Weston Phone 01299 405873 Mobile 07931 411733

Email mandy@westonswillsandprobate.co.uk **Website** www.westonswillsandprobate.co.uk

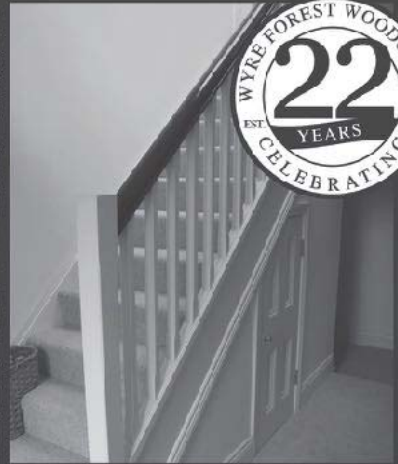
Address The Old Snuff Mill Warehouse, Park Lane, Bewdley, Worcestershire DY12 2EL



**WYRE FOREST
WOODCRAFT**
purpose made joinery

**Specialists in the Manufacture
of Purpose Made Joinery**

- Tailor Made Timber Windows
- Traditional and Contemporary Style Timber Doors
- Custom Made Staircases
- Bespoke Conservatories
- Made to Measure Gates




TO SEE EXAMPLES OF OUR FULLY FACTORY FINISHED JOINERY VISIT OUR WORKSHOPS AND SHOWROOM

www.wyreforestwoodcraft.co.uk

01562 68100 | enquiry@wyreforestwoodcraft.co.uk

Oldington Lane | Firs Ind Est | Kidderminster | Worcestershire | DY11 7QN

IRENA S.A.C DIP. (DIST). N.C.F.E. M.C.F.H.P.
FOOT HEALTH CARE PRACTITIONER




All your foot problems dealt with:-

- Foot health check • Verrucas etc.
- Corns • Medical Manicure
- Callus • Medical Pedicure

Free vascular Doppler Check of your feet

The Old Farmhouse
Button Bridge, nr Bewdley
DY12 3AW



Mobile visits available
01299 841 277
hessins@gmail.com

Paul Harding  **Tree Services**

- Tree surgery and felling
- Woodland thinning & maintenance
- Hedge trimming & grass cutting
- Supplier of hardwood logs, kindling and garden bark

•NPTC certified fully insured. Domestic and commercial work undertaken.
Tel 01584 890 993 Mob 07970 878 224

Hollywaste Holiday Lets

Our 2 bedroom (ensuite) cottage, sleeps up to 6 adults, situated in Hollywaste, Cleobury Mortimer. Fully equipped kitchen, open plan living room with log burner, dining area and downstairs WC. Includes Freesat and fast WiFi. There are enclosed & open decking areas outside, to take advantage of the beautiful countryside views, and a grassed area for outdoor games. Open all year round and welcomes adults, children, 1 large dog or up to 2 small dogs

Discount of 10% available for locals simply quote "keepitlocal" at the checkout

Events we can accommodate:
Staycations, Pamper weekends, Shooting weekends, Wedding venue, Minimoon stays, Stargazing weekends, Cookery weekends & events, Camping and caravan pitches are also available!
If you're interested in hiring our space or land for any event and time frame.

Tel: 07962 151322 Email: hollywasteholidaylets@gmail.com FB: <https://www.facebook.com/HollywasteHolidayCottage>
Website: <https://hollywasteholidaylets.squarespace.com> for more information

 **Kingfisher Crafts**
Sally Serrell-Cooke
07890 721657 | kingfishercrafts299@gmail.com
Visit me on Etsy and Instagram: **KingfisherCrafts299**



New Baby Hampers (Travel Changing Mat, Bibs, Nursing Towels, Quillow) *
Placemat Sets * Wine Gift Bags *
Cafetiere Jackets * Festive Gifts

Local Campaign - The Manor House

Welcome to the August update on the Manor House and welcome to our new subscribers who have joined us in the last two months. The word is spreading and more of us in Cleobury are taking an interest in the state of the Manor House in its prominent position in the High Street. So here we go with an update on what's been happening over the early summer months.

We received a report from one of the adjoining properties at the lower side of the House in Eagle Lane. Without going into the depth of the report, it was an account of assistance offered last year, to the owner Mr Iqbal, to protect some mature trees from being choked by Ivy. In carrying out this voluntary work, the neighbour had the assistance of a retired Chartered Surveyor who noted significant degradation of the fabric at the rear of the building and expressed the opinion that this needed urgent attention to prevent possible further damage from foliage or even water ingress.

We have attempted to engage with the Conservation Officer at Shropshire Local Planning Authority who has the power to require the owner to make any necessary repairs required or attend to any matters affecting the condition of the building. So far this has fallen on deaf ears and the only response we have had is that the building was inspected between two and three years ago and would not be considered further, usually over a period of no less than every four or five years. This is an unacceptable position for a building with an important Grade II* listing as the owners have a legal obligation to preserve the property. We have submitted the evidence to Shropshire Council in the report mentioned above. Additionally we met with Philip Dunne our local MP and toured the front and side of the building to illustrate the very poor condition and Mr Dunne has agreed to talk to Shropshire Council Conservation Office to raise our case in the hope that more proactive action will be forthcoming.

Mr Dunne and our two local County Councillors, Simon Harris and Gwilym Butler are all in agreement that this situation is unacceptable.

Since the owner is unsurprisingly silent, there is always the opportunity for rumours to be started and do the rounds. Such rumours, while always getting some traction, are only just that, rumours! The land bordering the Manor House to the left is known as 15b High Street and is owned by Mr

Fredrick Morris, but Hollywoods Fencing who rented the land were ordered to vacate and this has just happened. Contractors went in almost immediately and cut away to some extent all the brush and overgrowth on the plot of land. This suggests the whole plot could be offered for sale or development. There is no evidence of a Planning Application at this stage, but we will follow any applications that come into the public domain and report back.

Neither is there any current evidence that Mr Iqbal's company Marchaven Homes, the actual owners of the Manor House, are bidding to buy the land next door at 15b High Street. Marchaven Homes publish annual accounts at Companies house which are in the public domain and the last report dated September 2021 shows that the company is not solvent although the Director, Mr Iqbal states he has undisclosed reserves to maintain the company.

Questions are being asked about whether this property is classed as a business or a private residence and we have asked for a statement from the Town Council to confirm what the classification is for the purpose of taxation. Indeed we would like to understand if any rates are being levied on the property. This is a complex issue which we intend to try and investigate further.

It is our desire to try and gain photographic evidence of the rear of the property in support of our actions with the Conservation Officer and the classification of the building is important in this matter. As a private residence the owner has some right of privacy, but as Business property the rights are somewhat different. We hope to update you with this in due course.

In the meantime, we continue to pursue whatever avenues are available to us with the sole objective of seeing this grand property brought back to sit with pride in our lovely town.

We would encourage as much support for this as possible and the more subscribers we have to this cause, and our news letters, the stronger our voice will be. Please tell your friends and neighbours that the information we have is freely available on our web pages which includes a subscription option for new members as well. www.themanorhouse.info Thank you for reading and thank you for your support.

From Save The Manor House Team.



CARDS, GIFTS, HOMEWARE, HARDWARE AND EVERYDAY ESSENTIALS!

Friendly Staff, and a great range of stock with prices to match!

If you need it, and you want it! We've probably got it!

Pop inside before you pop online!

18 High Street, Cleobury Mortimer

Tel: 01299 489590

Email: cleoburrs.onthehighstreet@gmail.com

Like our Facebook page CLEOBURRS

Keep up to date with the latest products!



GW

Tree Stump Removal

Commercial and residential.

Fully insured, qualified and professional.

Your property left neat and tidy.

Happy to give quotes with no obligation.

Ring Sam: 07787095668 or 01299832549

Email: sam@gwstumpremoval.co.uk

Rachel Siddall

DipCFHP, MPSPract

Footcare in the privacy of your own

home:

Nail trimming
Ingrowing toenails
Corn removal
Thickening nails
Callus reduction
Verruca treatment
Diabetic foot care



07478 007913



Hobbs Building Services

EST 25Years.

A Total Plastering, Maintenance and Building Service for your home,
business and outbuildings.

Insurance work undertaken

Emergency call out service for general plumbing, roofing, boarding up damaged doors and
windows. For a free quote please call;

Ian on; 07967190742

Email: hobbsbuildingservice@yahoo.co.uk Or Call/Text Kelly on; 07790085307



Cleobury Mortimer Benefice Church services throughout the Benefice in September

St Mary's Cleobury Mortimer

Sunday 4th September – 10.00am Family Eucharist
Sunday 11th September – 8.30am and 10.00am Eucharist
Sunday 18th September – 10.00am Eucharist
Sunday 25th September – 10.00am Eucharist

St John the Baptist, Doddington

Sunday 4th September – 11.00am Eucharist
Sunday 25th September – 3pm Harvest Festival

St Michael and All Angels', Hopton Wafers

Sunday 4th September - 9.30am Eucharist
Sunday 18th September – 9.30am Eucharist

St John the Baptist, Kinlet

Sunday 11th September – 11.15.am Eucharist BCP
Sunday 25th September – 6.00pm Evening Prayer BCP

St George's, Milson

Sunday 4th September - - 6.00pm Evening Prayer
Sunday 18th September – 9.00am Eucharist

St Mary's, Neen Savage

Sunday 4th September – 6.00pm Evening Prayer BCP
Sunday 18th September – 9.00 Eucharist

All Saints', Neen Sollars

Sunday 4th September – 11.00am Village Worship
Sunday 11th September – 11.00am Village Worship
Sunday 18th September - 11.00am Village Worship
Sunday 25th September – 11.00am Eucharist



'Drop in at St Mary's' - every Thursday, 10.00-11.30am

- for coffee and a chat, if you are feeling lonely and confused, have lost the confidence to go out or have no-one to talk to. If you have problems and are struggling to sort them out or just wish to have a quiet place to sit. This opportunity is free and provides a peaceful environment to sit in the company of others and listen and talk if you wish to.

The Church Office is open Tuesday and Thursday from 9.00am-3.00pm
Contact details: Grace Johnson cleoburychurch@hotmail.com
Tel: 01299 272916

Cleobury Opticians

NHS & private eye tests ♦ FREE children's glasses

FREE NHS glasses ♦ Home visits



Opening Times-	
Tuesday	9am-1pm 2pm-5pm
Wednesday	9am-1pm 2pm-5pm
Thursday	9am-1pm 2pm-5pm
Friday	10am-2pm
Saturday	9am-1pm

www.cleoburopticians.co.uk

16 Church Street, Cleobury Mortimer, Kidderminster
DY14 8BX

Tel: 01299 270012

Email: cleoburopticians@outlook.com



All Aspects of carpentry work undertaken

Level 3 City & Guilds in Carpentry & Joinery, 20 years of experience

Tel: 07854 032750

Email: duncpearce1@gmail.com

Stewart Mumford Architectural Services Bespoke Architecture

Great value personal service backed up with extensive local knowledge, established links with other construction professionals to ensure comprehensive packages specifically tailored to individual needs.

Initial consultation free of charge.

Specialist in Works to Listed Buildings, Affordable Houses, Open Market Houses, House Extension and Alteration, Barn Conversion and Commercial Projects.



T: 01299 271068

M: 07977 921039

E: office@stewartmumford.co.uk

Simon Morton

Frank

I recently made a new friend. From the very beginning, I knew this was not a friendship destined to last - it was only ever going to be a momentary thing - but nonetheless, it was good to bump into my new acquaintance each day in the garden. No matter how mundane - from putting out the bins to watering the pots - my new chum was always there, and we'd take time to enjoy a chat. Granted, the chats were a little one-sided, primarily because my new friend was a homing pigeon. We never formally agreed on a name for him, but for the purposes of this column, we'll call him Frank. It appears that Frank had either got lost or just couldn't be bothered to continue the journey back home, so he decided to stop off at our place.

I don't think anybody told Frank that he was a pigeon. He acted more like a cat, watching me from a short distance most of the time and perking up as soon as there was any sign of food. At these close quarters, I could spot the rings dangling just above his feet (or should that be claws? Talons?), and I suddenly understood why he was such good company - he was someone's pet. Someone somewhere was wondering where the hell Frank had got to.

That someone could be local. Perhaps Frank had just done the short flight from

The Stable Tavern to our back garden, or he could just as easily be from somewhere further afield. A quick Google showed that your average homing pigeon can fly over a thousand miles before they start to think of themselves as particularly adventurous. They're also blindingly quick - fifty to ninety miles per hour is an acceptable cruising speed in the pigeon world. So Frank - bobbing his head around as I brush the patio down - could be from Cleobury, Cleethorpes or Cleto (a small town in Southern Italy - Google yet again comes to the rescue in my search for alliteration), and there seems no way of finding out for certain. While he's tame, Frank and I never got to the point in our relationship where I could pick him up and have a proper mooch at those fancy anklets of his. It wasn't that kind of friendship. Wherever he hails from, I imagine there will be someone wondering where the hell he's got to. Inevitably Frank has moved on. It's a bit like 'The Littlest Hobo' (if you don't know what that is, ask your parents - you're in for a treat); he made his presence felt, spread a little joy, and now he's ready to move on. Farewell Frank - safe travels.

Simon Morton

Bespoke framing and mounting for:

- Artwork
- Photographs
- Canvases



**The Framing Studio
Cleobury Mortimer**

Paul Serrell-Cooke
07791 378240

Bringing artwork and images to life



**Quality
firewood
for sale**

We source our wood from a reputable and sustainable source.

We advise customers to always buy well in advance of the next winter season. This allows further drying to get the wood to an optimum level.

Can deliver up to 20 mile radius from Bayton (DY14 9NA).

We can do multiple and large loads. Please call to enquire on pricing.

John Edwards 07531025018



H.C.P.C Number CH22527

**Cleobury Chiropody
Janet Manley**

Qualified Chiropodist
MSSCh. MBChA
BSYA (reflex) REIKI Master

Tele:- 01299-272841
Mob:- 07805-268439
Email: janetpmanley@yahoo.co.uk

2, Tenbury Road,
Cleobury Mortimer,
Kidderminster,
Worcs.
DY14 8RB

A Round Of Appaws

Professional Dog Groomer
C&G Levels 2 & 3 Diploma

Fully Insured

Call or text Jules on
07368359144

aroundofappaws1@gmail.com



**A. Farr Painting &
Decorating**

Give your home a beautiful new look....

Contact:
andyfarr12345@gmail.com 07815 855340

Lisa Steward Ironing services

Hopton Wafers



Please call: 07581065436 for more information

TERRY HENDERSEN

The news of Terry's sudden death ran through the town like a shock wave. He'd been working on a Friday, helping a relative with a job up a ladder at a cottage and fell. It is not clear at the time of writing if he suffered an aneurism and fell, or had the aneurism because of the shock of falling. He was helicoptered to the Queen Elizabeth Hospital, where he was treated, but on Saturday he passed away.

Stourport born and the oldest child in a large family, he courted and married Sue more than 50 years ago, living in Cleobury most of that time. They had three sons, David, Mark and Kevin, who in turn gave them six grandchildren. Our sympathy goes to all of them on such a sad loss.

He'll be remembered in the town as the electrician you went to for a thorough and reliable job, who said little and never wasted time on idle talk. An avid Wolves fan, he was 81 and had only recently agreed to retire. A thoroughly decent man, respected by all who knew him, who will be deeply missed.

THE FAR FOREST COUNTRY SHOW

It was good to see this popular local show back and enjoying strong sunshine; too strong for one sweet trader, whose stock suffered in the extreme heat and he had to withdraw.

Though the dog show and pony rides had to be cancelled in the interest of animal welfare, in the main marquee there was a sense of stepping back in time because of the lovely bunting which decorated the seating area.



The collection of fine silverware that attracted entries to the horticultural marquee.

Entertainment throughout both days was continuous. In the main arena the Quack Pack, Ferret Racing, Zennor's Dancers and Cleobury and

Tenbury Town bands delighted. This was supplemented by live entertainment from the music stage and talks on foraging, hop growing, Nature of Wyre and St Georges Farm in the Home and Garden Theatre.

The opportunity to meet and greet creatures less common in the UK such as meercats, snakes, spiders and hissing cockroaches proved very popular as did the tractor rides around the periphery of the site provided by the indefatigable Tony Pain.

Children and adults alike were surprised to be engaged in conversation by a cute looking animated figure on a bike. I had a short conversation about the weather with the little chap but have no idea how it was done. Thanks to Animated Magical Moments for the experience.

Late on Sunday, a tired band of volunteers sat down to a celebratory fish and chip supper and began to reflect on the weekend. The show was very well received by visitors and traders alike with many commenting that next year's dates are already in their diaries.

Report by John Guy and JR

 **A M Plumbing & Heating**

*General plumbing	*Oftec approved
*Bathrooms	*Oil boilers
*Hot water cylinders	*Servicing
*Central heating	*Power flushing

Call Today: 07565 181554

**3/4 Snooker Table
with cues, rest, score board
and balls.
£100.00 or near offer
Call Lin on
07432589093**

More Clarion Smalls

GUTTER CLEANING SERVICE

No ladders or scaffolding needed.
Can reach any awkward place.

All residential and commercial

Competitive rates

Call Ian on 07870384096

HIS & HERS

Dog Grooming Parlour

All breeds and
Cross breeds professionally
Trimmed and Groomed



J. A. Guest

Tel: 07790 796 027

PAUL LYNCH PLASTERING SERVICES

Recently relocated. Offering all aspects
of plastering including making and
repairing mouldings, cornices, etc.
Fully insured, references available.

07890 049 592

or

01299 272931

Washing Machine
Repairs and Sales

JULIAN BREAKWELL

Telephone 07791 633 746

Repairs to all makes, including
Bosch, Hoover, Zanussi and
Hotpoint

**NO CALL OUT CHARGE
FIXED LABOUR COST**

Ever After

- Breakfast club
- After school club
- Holiday club
- "Forest schools" outings
- 15hrs education funding
- 24U funding
- Age ranges: 3 months to 11 years



Day Nursery
Cleobury Mortimer

Please contact us on 01299 272 777
Or Call in to see us anytime.

Friendly, Caring Environment for the Community

Hi everyone, don't forget that we
are still collecting soft toys and
teddies to be sent to the less
fortunate.

So drop them off in Market Hall
please.

Many thanks for your help.

Collections4charities.com 07976307889

Piano tutor

Francis Engleheart

*All ages — I specialise in teaching adults
without previous experience*

I come to you

07710 288526 • fengleheart@hotmail.com

S. L. CARTER

**PROFESSIONAL PAINTER AND
DECORATOR**

**PLASTERING, TILING, COVING AND
GLAZING**

CLEOBURY MORTIMER

TEL: 01299 272868

MOBILE: 07815 483 029

So, Lloyds have finally pulled the plug on the Cleobury branch after over 100 years. I expect that those of you who are customers will have had the letter. Shame there are so many inaccuracies in it. The last time I looked, central Ludlow was over 12 miles away and Kiddy at least that. Perhaps they have used the distance as the crow flies (note to Lloyds – we have to take the bus) or they have used Nautical Miles which are 6080 feet instead of 5280 which might explain the discrepancy. Apart from that, they still call the Londis shop 'Butlers' which it hasn't been badged for some years and speak of the availability of their cash machine (another note to Lloyds – this hasn't been in use for years and will be physically removed shortly). Still, never mind, there is always the Post Office – or would be if they operated reliable hours and didn't just open when they feel like it...

Still, apart from those minor issues, spot on. A cynical person (not me obviously) might think that this was cobbled together years ago by using a standard template and just inserting the appropriate branch name. Just shows what can be achieved in terms of reducing visitor numbers when you restrict opening hours as well as slashing the type and number of services available at the branch. However, I note the expensive TV ads still use the slogan 'By your side' but only if you have very good eyesight and ignore the curvature of the Earth.

More snowflakery...York Dungeon has opened a carriage ride named after Dick Turpin, the well known Highwayman, only to be greeted by parents complaining that the word 'Dick' was offensive. They wanted it renamed 'Richard' (note to parents: he was always called Dick). To their credit, bosses have said that the name will stay.

You may remember the case of the teenager who spent a couple of nights in a Spanish cell after sending a Snapchat message saying he was a Taliban member who was going to blow up the plane he was travelling on. As a result, it was diverted to the nearest airport escorted by

fighter jets causing major disruption and expense. Turns out he played chess for England which just supports my theory that you can have a brain the size of a planet but it's no substitute for common sense...

After a period of dry weather we are threatened with hosepipe bans, not helped by the fact that not a single new reservoir has been built in the last thirty years. Obviously it's all our fault for actually using water but what about the treated water that never gets as far as our taps?. Recently published figures show that Severn Trent is the second worst performer in the leaks table, losing an average of nearly 450 million litres per day over the last three years. On average, the amount lost through leaks every day by the water companies is enough to supply nearly 80% of UK homes. Obviously leaks can never be stopped entirely but surely more could be done to reduce them. But it's not all take and no give as now we have had some rain, rivers and coastlines across England are being flooded with raw sewage mixed with rainwater resulting in a number of beaches being closed. So, to sum up, they can't cope with dry weather and they can't cope with wet weather but they can pay their (mostly foreign) owners £30 billion in dividends since privatisation not to mention multi million pay packages for their bosses (nearly £4 million in the case of Severn Trent). How much would they be worth if their businesses actually worked properly?. Clearly a victory for some, if not us.

Worcestershire Council have announced that they have resurfaced 120 miles of road in the County in the last accounting period and from what I have seen, these are proper tarmac surfaces rather than cheapo tar and chippings. I wonder what the figure for Shropshire is and will try to find out. Still, they have finally repaired the potholes in Tenbury Road shortly before English Heritage gave them Grade 2 status as an ancient monument site. AJG

NEWSPAPER DELIVERIES



Monday- Saturday

Covers Cleobury Mortimer and Clee Hill

Contact Laura Callwood on 07495 708404

or lauracallwood@outlook.com

WILMAS CLEANING & IRONING SERVICES

Experienced cleaner, very trustworthy and reliable. If you would like your ironing done you can drop to my house. I am available weekdays, and weekend's times/days flexible. References are available upon request.



Please contact me for further details on

07891416477
01299 272 941



Number Nineteen

No.19 Denture Repairs

Dental Laboratory

SPEEDY, QUALITY DENTURE REPAIRS

Cracked/broken dentures repaired the same day.

A 1 HOUR service is available for when time is of the essence, just call to make an appointment .

19 Lower Street, Cleobury Mortimer, DY14 8AL

Email: nevilleweaver@googlemail.com

Phone: 07973856733

All work undertaken by a GDC registered technician



A.B. Plastering
Plus Traditional Lime Plastering

Adrian Booton
PLASTERER

4 Severne Green, Bayton
Nr Kidderminster, DY14 9LL

Tel: 01299 832 838
Mobile: 07974 582 524



TOTAL PROPERTY MAINTENANCE

Fireplaces built for multi-fuel burning stoves,
Plastering, Building & General Maintenance

Rob Taylor

Mobile: 07944 074540

Landline: 01299 832734

Email: rptbuilding@hotmail.co.uk

E.PURSLOW & SON LTD

Stone, Gravel, Cement Supplies

Approved Coal Merchant

Calor Gas Stockists

Tarmacadam Specialists

Car Parks and Driveways

Constructed.

TEL: 01299 270314

David Ward
firewood



Do you need a dependable consistent quality supply of seasoned or kiln dried hardwood and softwood firewood?

Cut and split to suit and delivered in breathable 1.2-cubic metre bags, so no need to restack.

Small delivery vehicle, fitted with crane, can deliver to most locations and situations.

CALL DAVID TO DISCUSS YOUR REQUIREMENTS:

Mobile: 07866 441154

Alan Smith Aerials

Digital TV Installations.

Freeview aerials fitted and distributed around the house.

Freesat box, dish, and cable supplied and fitted. One off payment, **No contract or subscription required.**

Extra points, Repairs, New fits, Set ups, Multi room.

All work is carried out by a *Local*, fully qualified and insured installer.

01299 270007 or 07970 675728

THE CLARION SOCIAL CALENDAR

Date	Time	Details	Contact	Telephone
Thurs 1 st		BLACK AND PURPLE WHEELIE BINS EMPTIED TODAY		
	10.30	Rock Pathfinders step out from Brown Clee Hill Picnic Area. PAGE 21		
Sun 4 th	10.00	CMFA Social Walk, starting from the Parish Church. PAGE 21		
Wed 7 th	6.00	Food Bank Late Night Market Hall, Church Street		
	7.30	Whist Drive at Doddington Village Hall		
Thurs 8 th		GREEN DOMESTIC WHEELIE BINS EMPTIED TODAY		
	7.30	Fun Quiz Night, The Fighting Cocks, Stottesdon		
Sat 10 th		Ride and Stride at St Johns in Doddington sounds like fun. PAGE 31		
Sun 11 th	10.00	The Border Classic Bike show is at Lacon Childe School.		
Mon 12 th	6.30	The Creative Writing Group meet at the Library, Love Lane		
Tues 13 th	7.30	Cleobury WI meet at the Market Hall. PAGE 9		
Wed 14 th	10.00	Walking for Health's Awayday starts from Blackstone car park. PAGE 21		
	10.00	CoCo Coffee Morning, Market Hall		
	7.30	Royal British Legion meets at the Sports & Social Club, Love Lane		
Thurs 15 th		BLACK AND PURPLE WHEELIE BINS EMPTIED TODAY		
	10.00	Rock Pathfinders walk starts from the Button Oak Inn. PAGE 21		
Fri 16 th	2.30	Cleobury WI's Big Day – its 100 th Birthday! PAGE 9		
Sat 17 th	9.30-12.30	Cleobury Country Farmers Market in and around St Mary's Church		
	9.30	Craft Fair in the Market Hall		
	8.00	Bingo Night at Doddington Village Hall		
Sat/Sun 17/18	9.00	Weston Park Country Fair, Weston Park, Shifnal. Off the A5. Its huge!		
Mon 19 th	7.30	The Reading Group gather at the library. PAGE 9		
Wed 21 st	7.30	Whist Drive at Doddington Village Hall		
Thurs 22		GREEN DOMESTIC WHEELIE BINS EMPTIED TODAY		
Fri 23 rd	7.30	British Legion's harvest Auction at the Sports & Social Club. PAGE 15		
Sat 24 th	7.30	Flicks in the Sticks presents "The Duke "at the Parish Hall. PAGE 31		
Sat 25 th	10.00	Great Global Greyhound Walk local branch at Wyre Forest. PAGE 13		
	3.00	Harvest Service and Tea at St John's, Doddington. PAGE 31		
Mon 26 th	7.30	Nearly Dead Poets Society meet at the library in Love Lane. PAGE 5		
Wed 28 th	10.00	Walking for Health steps out from the Market Hall. PAGE 21		
	10.00	Coco Coffee Morning, Market Hall		
	2.30	Cleobury WI meet at the Larch Barn. PAGE 9		
Thurs 29 th		BLACK AND PURPLE WHEELIE BINS EMPTIED TODAY		
	7.30	Bingo Night at The Fighting Cocks, Stottesdon. Basket meals £6.00		
Fri 30 th	8.00	Bingo Night at Doddington Village Hall		
		LOOKING FORWARD TO OCTOBER.....		
Wed 5 th	7.30	Whist Drive at Doddington Village Hall		
Thurs 6 th		GREEN DOMESTIC WHEELIE BINS EMPTIED TODAY		
		AND A REMINDER ABOUT THESE REGULAR LOCAL EVENTS.....		
Monday	8.00	Bingo in the Market Hall, except Bank Holidays		
Tuesday	2.00	The Friendship Club meets in the Parish Hall	Val Breakwell	CM 270830
1 st Wed	6.00	Late Night Food Bank, Market Hall		
Thursday	10.00	Drop in at St Mary's Church to chat and maybe share a problem?		
Thursday	7.00	Lessons in the Birth Dance for expectant mums, in the Market Hall		

Lower St Garage

7 Lower St, Cleobury Mortimer. DY14 8AA



- M.O.Ts on cars, motor bikes & small commercial vehicles
- Tyres, Tyre fitting,
- Puncture repair and Tracking.
- Diagnostics, Air conditioning
- Welding.
- Service and Repairs to most vehicles.
- Delivery and Collection Service Available

Contact The Team at Lower St Garage on: 01299 270208



Stove Installations, Service and Repair

- All solid fuel wood burners and boilers supplied and installed
- Chimneys relined and twin wall systems built
- Chimney Pots, Cows, Carbon Monoxide alarms and Air Bricks fitted
- All Stoves and Fires serviced including chimney sweep
- Hetas Landlord Safety Certificates

Tel: 01299 272712 Mbl: 07807 343006
email: info@rweaversservices.co.uk



Family run business of 30 years, call us for a free no obligation quote

Finance available, buy now and pay later

5 Lupin Works, Worcester Road, Kidderminster DY10 1JR
Phone: 01562 822855 – Email: sales@twshq.com

Tele:- 01299-272757 *Hands on Printing* **Email:- clickclick2@hotmail.co.uk**
Mobile 07708 587787

All digital media printed to 6"x4" 5"x7" 8x6" 10"x8"
CANVAS WRAPS FROM 12"X16" - 30"X 20"
ENLARGEMENTS FROM 12X10" TO 24X36"
 FROM PHOTO'S, DIGITAL MEDIA & 35mm SLIDES

PASSPORT PHOTO'S ONLY £5-00
WHILE YOU WAIT

MOST VIDEO FORMATS TRANSFERRED TO D.V.D.
 USB or SD cards

INCLUDING VHS - VHSC - SONY 8 - DIGITAL 8 - Hi8 - MINI DV & BETAMAX
 REEL TO REEL & CASSETTE
AUDIO TAPES & OLD LPs TO CD

PHOTO & VIDEO FILES TRANSFERRED FROM MOBILES TO DVD ETC.

Video Filming Service

43, High St.
 Cleobury Mortimer.
 DY14 8DQ

STANDARD 8 - SUPER 8 FILMS TRANSFERRED TO D.V.D.
 USB or SD cards
DAMAGED PHOTOGRAPHS RESTORED ETC.

BIRTHDAY AND CELEBRATION BANNERS

Look Who's 50 Today!

VINYL BANNERS - BUSINESS CARDS - SHORT RUN FLYERS INVITATIONS - ORDERS OF SERVICE

B-W OR COLOUR PHOTOCOPIES
SELECTION OF PHOTO FRAMES
 Traditional Studio Portraits and Pet Photo's

 **LACON CHILDE SCHOOL** 
 the future begins here
 Headteacher: Darren Reynolds

1735



Lacon Childe School, Love Lane, Cleobury Mortimer, DY14 8PE Tel. 01299 270312 email - admin@lacon-childe.org.uk


LUDLOW SALVAGE
 ~ Est 2017 ~
 Reclaimed Building Materials and Architectural Antiques

Station yard, Station road,
 Woofferton, Ludlow SY8 4AW

T 07805 312168
@ ludlowsalvage@gmail.com
f /ludlowsalvage
ig /ludlowsalvage

WWW.LUDLOWSALVAGE.CO.UK

BoomeranG
 of Cleobury Mortimer
 private hire travel

- Friendly, reliable service
- Local & long distances
- Fully council licensed (up to 12 passengers)
- Airport transfers
- Courier service
- All occasions catered for

Tel: 01299 271257, Mob: 07411 142755, Email: stuart.boomerang@yahoo.co.uk

Cleobury Mortimer Golf Club

At Cleobury Mortimer Golf Club we believe that a really enjoyable golf day takes more than just a great golf course. We make sure that your whole experience, from the friendly welcome in the golf shop to your drinks and meal in our relaxed clubhouse, is all part of a day you'll remember.



Everyone Welcome

Membership available.

Just some of the many benefits of joining Cleobury Mortimer Golf Club

- Access to full length 27- hole golf course
- Opportunity to achieve and maintain a handicap
- Family, Friendly Environment
- Playing opportunities at all times of the week
- A range of competitive opportunities
- Open dawn to dusk 363 days a year.

We look forward to meeting you at Shropshire's friendliest golf club.



- ☎ 01299 271 112 (ext 1)
- ✉ pro@cleoburygolfclub.com
- 🌐 www.cleoburygolfclub.com

Meet your safer neighbourhood team

We are a dedicated group of police officers and police community support officers (PCSOs) who work with local communities and partner organisations to keep our residents, businesses and visitors safe and to prevent crime and tackle anti-social behaviour in your locality.

Officers can be contacted on the below numbers concerning community issues. To report a crime in progress call 999 and for non emergencies, report online at www.westmercia.police.uk/report. If you are unable to report online, you can contact us via the 101 non-emergency number.



Inspector
Nicola Roberts



Sergeant
Kate Øen

Bridgnorth

bridgnorth.snt@westmercia.police.uk



PC
Jono Lightfoot
07811 761855



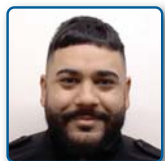
PCSO
Stephen Dunn-Brown
07814 053796



PCSO
Mandy Leek
07816 236749



PCSO
Helen Oakley
07816 237839



PC Karanjit Singh
07929 721377
(Covers all areas)

Cleobury and Highley

ch.snt@westmercia.police.uk



PC
Wayne Strangwood
07773 054587



PCSO
Shelley Hyde
07816 228337



PCSO
Jacqui Fletcher
07816 238536

Shifnal and Albrighton

sa.snt@westmercia.police.uk



PC
Mandy Cooper
07814 052061



PCSO
Steven Breese
07816 237845



PCSO
Sam Newbrook
07814 285101

Broseley and Wenlock

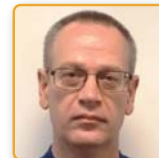
bmw.snt@westmercia.police.uk



PC
Andrew Boardman
07773 044894

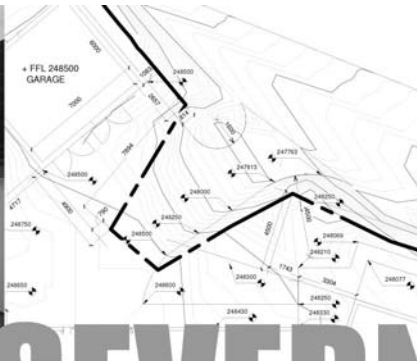


PCSO
Heath Amies
07773 052600



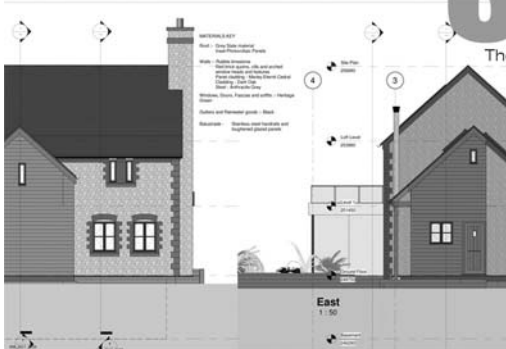
PCSO
Malcolm Goddard
07870 166746

Whilst the information is considered to be true and correct at the date of publication, changes in circumstances after the time of publication may impact on the accuracy of the information (April 2022).

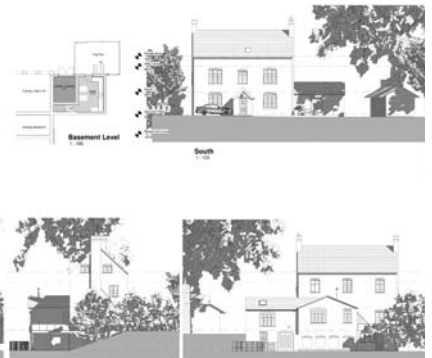
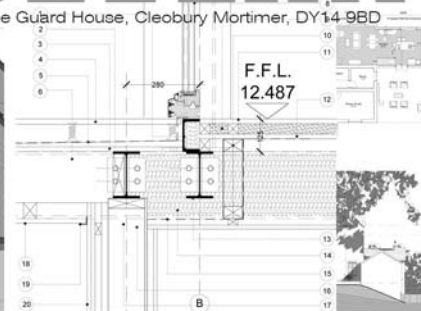


SEVERN

architects



The Guard House, Cleobury Mortimer, DY14 9BD



We are a friendly Shropshire based architectural practice with plenty of experience in all kinds of residential projects large and small. Using the latest 3D software package and technology we can turn your virtual dream home into a reality.

Contact us now on 07825 759484 or email julie@severnarchitects.co.uk for your consultation

Our Architectural Design Services include

- Design & Feasibility Studies
- General project Advice
- 3D Modelling
- 2D CAD Drawing
- Planning Advice and Submissions
- Building Regulation Applications
- Tender & Construction Drawings
- Contract & Project Management

RIBA 

Chartered Practice

KIDDERMINSTER

SELF STORAGE AND REMOVALS



STORAGE

Free insurance . Flexible Terms
Fixed Price Guarantee . No hidden costs

REMOVALS

Professional Removal Service
Est. over 25 years

PACKAGING MATERIALS

Boxes, Bubblewrap, Tape Etc. for sale
Free local deliveries on orders over £20

01562 744088

www.kidderminsterselfstorage.co.uk

Unit 11 Finepoint Way, Stourport Road, Kidderminster DY11 7FB
info@kidderminsterselfstorage.co.uk



CLEOBURY COMMUNITY HUB

Coffee Shop, Climb61, Youth Events

Mondays - 9:30am - 8pm

Tuesdays - 9:30am - 9pm

Fridays - 9:30am - 5:30pm

What an awesome summer we have had! Throughout the summer holidays we have been open for regular coffee shop and climbing plus...

- Two 3 day holiday clubs that were attended with an average of 21 children each day.
- We have had a fun day with 174 people coming through the doors, enjoying a free bbq, climbing, soft play and games.
- We have also taken 7 young people to a Christian Festival called Limitless at Staffordshire Showground where there were 4000 other young people. There was so much for them to do and get involved in, lots of dancing, sports activities and making new friends as well as so much more.

Now that August is over, we cannot wait for what the new academic year brings.

Focus on... IBD Support Group - 1st Tuesday of the month 7:30pm-9pm

Open to people with Inflammatory Bowel Disease, their family and friends.

A place to share knowledge/ personal experience and support in an informal setting.

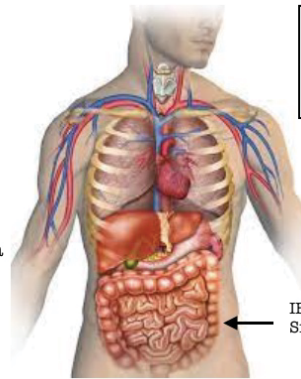
Don't forget our regular activities:

Over 300,000 people suffer with IBD in the UK
That works out at:

1 in every 210 people

Over 50 people will have IBD in the Cleobury Mortimer area

Over 150 people will be affected by IBD in this same area



IBD is a term mainly used to describe 2 superpowers: Ulcerative Colitis and Crohn's disease

IBD affects the Bowel - Small and Large Intestines

Mondays - Rock Tots, Kids Climbing Club, Youth Climbing Club, Coffee Shop, Soft Play, Climb61 Bouldering.

Tuesdays - Coffee Shop, Climb61 Bouldering, Soft Play

Wednesdays - Hub Youth (alternate weeks)

Thursdays - Hub Youth (alternate weeks), Ladies Night (8th Sept)

Fridays - Coffee Shop, Climb61 Bouldering, Soft Play

Climb61 August Session Times - To book: www.smyp.org.uk

Mondays 9:30am-11am, 11:15am-12:45pm, 2:15pm-3:45pm, 4pm-5:30pm, 5:45pm-7:15pm, 7:30pm-9pm

Tuesdays - 9:30am-11am, 11:15am-12:45pm, 2:15pm-3:45pm, 4pm-5:30pm, 5:45pm-7:15pm, 7:30pm-9pm

Fridays - 9:30am-11am, 11:15am-12:45pm, 2pm-3:30pm



@cleoburycommunityhub

@saintmarysproject @cleoburycommunityhub

ONE STOP ROOFING

The Flat Roof Specialists



- Rubber, Fibreglass & Felt
- Re-pointing & Chimney Repairs
- Fascias & Guttering



Take advantage of our offer: Replace your flat roof Making EPDM (rubber) your choice for a long lasting, weatherproof & high slip resistant membrane, with a lifespan of 50 years, **get it for the same price as felt**, which only carries a 10 year guarantee!

Replace your flat roof with EPDM (rubber) & add a skylight or lantern, giving extra light to your room starting **from as little as £400!!**

Freephone 0800 0855277 * 07538 471274

www.onestop-roofing.co.uk

onestoproofinguk@gmail.com

Family business est. 35 years.
All repair work undertaken

Proud members of
Checkatrade.com
Where reputation matters

CLEOBURY SEAFOOD & FREEZER CENTRE

6 Newhouse Farm - Tenbury Road - Cleobury Mortimer

01299 271345

Ready Meals

*We stock a wide range of ready meals, from the ordinary to the extra ordinary !
Plus a range of Vegetarian, Gluten Free and Vegan meals.*

Mr Dave's

*Meat, Chicken, Prawn and Vegetarian Balti, Madras Curry
Mr Dave's extra large naan, plain and garlic & coriander.*

Fish

*Cod, Haddock, Plaice fillets, Sea bass, Lemon sole, Cod Loins, Smoked Haddock.
Battered & breaded fish fillets. Young's Jumbo Cod Fish Fingers.(Very Popular)*

Seafood

*Raw king Prawns, Squid, , whitebait, cooked tiger prawns, scallops, seafood cocktail.
Hot & Spicy Prawns, Breaded Cod & Plaice Goujons*

*New Fish Cakes Thai Style Cod & Prawn, Smoked Haddock, Mozzarella & Spring Onion,
Sea Bass, Cod, Lime & Ginger.*

Fruit and Vegetables

Potato Products

Bannister Jacket Potatoes, Oven chips, Sweet Potato Fries Twister Fries, Hash Browns, Spicy Wedges

Chicken Products

Southern Fried Breaded Chicken Steaks, Breaded Chicken Goujons, Chicken Nuggets, Chicken Bites.

Gateaux for all occasions

BENNETTS ICE CREAM

Opening Times 9am to 4.30pm Mon to Friday. Saturday 9am to 12

Visit our web site www.cleoburyfreezercentre.co.uk

Cleobury Clarion September 2022

Page 54



"We tried artificial flies. We tried lures. We tried live bait. Nothing works ... it's like they're psychic!"



"Blood-curdling screams. Hayes, will do nothing to help us catch a fish."



Home Support Services

All staff enhanced DBS checked with over 20yrs experience and training within the local authority/social services mainstream and dementia care sector. Fully insured.

Are you in need of support with the following basic day to day tasks?

Assistance during the day or night	Completing Forms
Companionship	Pet Care
Shopping/Household tasks	Attending social events/ appointments

Contact Liz
Tel: 01299 271623
Mob: 07826 929222
liz@lifelifeathome.co.uk

Other support services available on request.

www.lifelifeathome.co.uk

Contact Tracey
Tel: 01299 211660
Mob: 07957 659909
tracey@lifelifeathome.co.uk



BOOK YOUR MOT WITH US



01299 841 391










SERVICING & REPAIRS TO ALL MAKES & MODELS

■ Clutches & Cambelts	■ Exhausts, Batteries & Tyres	■ Wheel Alignment
■ Diagnostics	■ Recovery	■ Welding

 Follow us on Facebook: LewisMotorsKinlet



KINLET C OF E PRIMARY SCHOOL

Love to Learn – Learn to Love








- Outdoor play areas
- Kind – Inspire – Nurturing – Learning – Eco-friendly -Teamwork

- Small family atmosphere

www.kinlet.shropshire.sch.uk

admin@kinlet.shropshire.sch.uk

Telephone: 01299 841210

Booton Brothers



Construction

Rich: 07445298747

Mike: 07853225401

bootonbrothers@outlook.com

All building work undertaken

Elite Sweeps

Professional Chimney Sweep

& HETAS Stove Installer

- ✓ Prompt, reliable & friendly service.
- ✓ Cowls and Chimney Pots fitted.
- ✓ Fully qualified and fully insured.
- ✓ Guild certificates issued after every sweep.
- ✓ HETAS Approved Installer.



Call Eddie Tel. 01299 382222 / 07895 612915

www.elitesweeps.co.uk



I.P.T. GROUND SOLUTIONS

Over 30 years experience

For all pipe installations:

• Sewage • Storm drainage

• Blockage/Repairs • Ditches

• Grass Cutting / Hedge Trimming

• Driveways • Ground clearance

For all your ground needs

Contact Ian on:

T: 07870 384 096

E: ian.ptaylor@yahoo.com

W: iptgroundsolutions.co.uk

With the hot weather and Bank Holiday mayhem behind us now, our focus is on who the next Prime Minister will be and what priorities for a newly formed Cabinet will take precedence. Cost of living, inflation and the squeeze on our money will all be at the forefront of everyone's thinking, sadly including the scammers operating all over the world and often apparently free from most law enforcement agencies. To date the top 5 scams that we are seeing in the UK are mainly operating over Social Media and include, Dating Scams, Suspicious Retailers, Bogus Technical Support, Government Agencies and General Fraudulent Email Solicitations. It is a fact that there are many lonely people in every community and many turn to Social Media for any form of comforting communication. Enter the scammers who create fake but convincing persona's designed to suck in their victims and eventually convince them to send money for all sorts of plausible but fake reasons. The serious scammers will take the long-term approach and spend weeks or months building confidence in their victims, even to the extent that the victim develops a deep trust and love for the scammer. At this stage the scammer already has a pretty intimate feel for how wealthy their victim might be and starts the subtle but devious begging routine asking sometimes for small amounts of money for plausible reasons and if successful moving on to ever increasing demands with promises that they will meet very soon and cement their relationship. Sadly, this never happens, and the victims are left perhaps with a significant loss of their savings and of course even lonelier than they were before it started. Any financial loss is disgusting but using emotional blackmail like this is totally despicable. My advice to everyone is to react to any unsolicited social media message from someone who is trying to 'befriend you' with great suspicion and don't just jump in and be sucked into anything that puts your money at risk. Ask a friend or family member who you can trust to check with you and advise you.

There are a lot of unsolicited emails coming in from Bogus Technical Support scammers who claim your Internet Security software that is about to expire. They claim you can simply

renew the software to ensure you are kept safe on the internet by filling in a simple form which of course asks for your bank card details. Many companies operate legitimately online and when you make a purchase you have to provide bank card details to confirm the purchase. This requires the Name on the card, the long number on the front, the expiry date and of course the 3-digit security number on the back. For a scammer this is all they need to go ahead and make purchases impersonating you and having goods delivered to a different address. Fortunately, most Banks have automated security processes in place that alert them to patterns of spending that are unusual for you as an individual. They will then contact you immediately to confirm if you really did make a specific purchase and thereby prevent the scammer using your details any more. It's all too easy and convenient to order and pay for goods and services over the internet, but just be sure you know exactly who you are dealing with and treat any new or unsolicited offer of goods carefully. STOP and CHECK before YOU BUY. A close family member was caught recently with an advert on Facebook looking for someone to re-home a specific breed of dog that my relative particularly liked. She was offered the young puppy at no cost other than the cost of specialised transportation as the seller lived a considerable distance away. The seller said the cost would be £150 and she would pay £50 if my relative would cover the rest. "Just send the money by Bank transfer" was the request and despite her Bank asking three times if she was sure this was not a bogus transaction, she went ahead and paid the money. Of course, the seller suddenly disappeared as did her money and the Bank refused to compensate as they had asked three times to confirm it was genuine. To say she is gutted and embarrassed is an understatement as she has read my articles but allowed her emotions to totally cloud common sense. What a sad, but perfect example of how we all can be conned if we don't **STOP, THINK, CHECK** before going ahead.

Don't let this happen to you, **STAY SAFE.**
Thanks for reading. *Nigel Reid*



EVERYTHING INTERIOR UPHOLSTERY

REUPHOLSTERY SERVICES:

- AUTOMOTIVE
- CARAVANS
- CAMPER VANS
- TRADITIONAL & MODERN
- COMMERCIAL & BESPOKE
- DOMESTIC
- CARPET & UPHOLSTERY CLEANING
(in partnership with WE GLEAM)

OVER 30 YEARS EXPERIENCE



CONTACT US TODAY

Unit 19 Old Station Business Park, Cleobury Mortimer, DY14 8SY
07961 712683 / 07961 792103
www.everythinginterior.co.uk
email: everythinginterior@outlook.com



Professional Family Estate Planners



- Wills or Lasting Powers of Attorney from £95
- Free Will reviews
- Probate support
- Care home fee avoidance
- Free funeral plan with every Will
- Family Protection Trusts

"A lifetime's attention to complex legal issues as a retired Detective Superintendent and now a Private Client Lawyer means **you can definitely trust Mark and his daughter Lauren** to write your Will"

T: 01299 251442
E: info@ambalegalservices.co.uk
W: ambalegalservices.co.uk



- Appointments by telephone, video link or in the comfort of your own home
- Over 45 years' experience in law
- Friendly and professional support for you and your family
- Call us up to see how we can help!



ARE YOU LOOKING FOR Independent Financial Advice?

Consequential Planning are your local independent financial advisers. We have a highly qualified team with extensive experience in all aspects of financial planning. We can offer help and advice on investments, pensions, protection and mortgages.

Telephone 01299 407128
 to arrange a free financial review or visit:
www.cnsq.co.uk





Burning Blocks

www.burningblocks.co.uk



A safe and easy to use alternative for logs for both wood stoves and open fires

Discount for local delivery quote: "family10" at the checkout

- Easy to light / roaring fire in under 5 mins
- Easy to stack / 10kg packs
- High heat / similar to coal on output
- Each briquette lasts over an hour
- Low moisture / 8% moisture maximum
- Store undercover

UK wide delivery available, approx. 2 days

buy online at www.burningblocks.co.uk

For more information:-

Email: burningblocks@gmail.com Website: www.burningblocks.co.uk FB: <https://www.facebook.com/burningblocksbriquettes>



Richard Haines

The Worcestershire Chimney Sweep

- ◆ Traditional & Power Sweeping Services
- ◆ Certified Chimney Sweep
- ◆ Insurance Recognised certificate issued



M: 07752 116629 T: 01584 781358 E: lostcity5@hotmail.co.uk

www.theworcestershirechimneysweep.co.uk




LUDLOW FIREWOOD

~ Est 2019 ~

Suppliers of Premium Grade Ready to Burn Firewood, Beautifully Crated and Delivered to Your Door



T 07949 318014

@ ludlowfirewood@gmail.com

IG /ludlowfirewood

F /ludlowfirewood

Station yard, Station road, Woofferton, Ludlow SY8 4AW

WWW.LUDLOWFIREWOOD.COM

Available in Barrow bags and nets for all your access requirements.



POLICE SAFER NEIGHBOURHOOD TEAM REPORT

Last month, along with Superintendent Stu Bill and Deputy Police and Crime Commissioner Nicola Lowery I attended a public meeting that demonstrated the unity of the Cleobury Mortimer Community. As the Safer Neighbourhood Team (SNT) Sergeant for South East Shropshire, it was extremely reassuring to see so many people attend the meeting. Although many expressed their frustrations about criminal activity and anti-social behaviour in the town I felt that it was still a positive meeting in which a new conversation was started about how to look after the town and the folk within it. The meeting was also a great opportunity for us to share information about how to report concerns and how information is turned into positive action.

Some of you may remember 'Dixon of Dock Green' and some of you may remember 'The Sweeney'. Although neither reflects how modern policing should be today, there is still a time and place for patrol, and a time and place for bashing down doors. Modern practices recognise that preventative and partnership working is key to not just dealing with crimes when they arise, but that we should address the underlying causes and understand why they are committed. By having a better understanding it allows the public to take responsibility alongside the police and create sustainable, long term plans which will improve guardianship of not only the streets and the vulnerable, but reduce the likelihood of criminal behaviour.

The information that informs our understanding of who, what and where to focus our efforts is driven by information from the public and partnership agencies. It is not only the responsibility of the police, but the public to have the interests of the community in their hearts. If you see something report it. By identifying patterns, trends and identifying risk the police can respond. It also means that we, the police, are accountable to you and when we don't act we need to be able to justify this.

Following on from the public meeting on July 27th, I then met with Cleobury Mortimer Town Council on July 30th, where we looked at ways to improve the issues in the town. Chair Debbie Brown was very supportive of the youth in the town, speaking at length with a view to seeking additional mental health services and ways to make the most of Cleobury's shared spaces. From a police perspective the SNT will be conducting safer streets surveys with residents and speaking with young people in an effort to understand the views of those who could not make the public meeting.

The SNT have continued to patrol Cleobury Mortimer and their activities can be followed via Twitter @CleoburyCops. The team have also been out conducting licensing checks, managing the safety of domestic abuse victims and supporting patrol with crime investigations. We are committed to working with our partners to help build a tailored approach to addressing the issues of the town and we will be speaking to Shropshire Council about traffic enforcement and anti-social behaviour. I would also like to offer reassurance that work is always ongoing with social housing providers and children's services to identify and deal with those at risk of issues such as County Lines, cuckooing and burglary.

The issues being experienced in Cleobury Mortimer can only be addressed if we all work together by sharing ideas and responsibility for keeping people safe. However, as with all public services the police must risk assess calls and prioritise what resources we have available to direct them to where the need is greatest and risk is highest.

I would like to end by sharing with you a quote Superintendent Bill read out during the meeting from Sir Robert Peel's seventh principle, it said: "To maintain at all times a relationship with the public that gives reality to the historic tradition that the police are the public and that the public are the police, the police being only members of the public who are paid to give full-time attention to duties which are incumbent on every citizen in the interests of community welfare and existence."

If you become aware of a crime or anti-social behaviour call 101 if it non-urgent, Crimestoppers or use the 'Contact Us' page on the West Mercia Police website or email the Cleobury Mortimer and Highley SNT on ch.snt@westmercia.police.uk. Always dial 999 in an emergency.



EnergyZone

Integrated Renewable Solutions

SHROPSHIRE HEAT PUMPS

EnergyZone are one of Cleobury's best kept secrets. We are one of the largest and longest established renewable engineering companies in the UK installing heat pumps since 2003. 14 in house engineers with over 130 years combined experience completing over 1000 Domestic and Commercial systems all over the UK. Based next to Hobsons Brewery in Cleobury Mortimer we are your local experts in heat pump systems.

Heat pumps are rapidly becoming the standard heating system for all new build properties, as they always have been in many parts of Europe, and the Government is offering a very generous incentive to encourage anybody with an Oil, LPG or Electric boiler to replace this with a heat pump.

Replacing your boiler with a heat pump has many advantages;

- **Lower running costs for your heating - up to 50% lower**
- **No dependence on fuel deliveries**
- **Removal of current boiler under our scrappage scheme**
- **Up to a 10-year warranty with a 20 to 25-year life expectancy**
- **Government backed Renewable Heat Incentive (RHI) to help cover installation cost over 7-years (available until March 2022)**

What can EnergyZone offer?

Complete design and installation of a heat pump system, including all paperwork required to enable you to claim the maximum Government incentive

Upgrade of your old radiators and hot water cylinder if required

Local support with annual servicing through our EZcare package

With the current Government incentive now is a great time to consider scrapping your old fossil fuel boiler and installing a heat pump that is not only good for the planet but also your pocket.

Call us for a free home assessment from one of our engineers.



Fully accredited installers of the brands above ensuring the correct model is selected for your home

01299 270011

www.energyzone.co.uk sales@energyzone.co.uk



Community Contacts for Clarion Readers

CEMETERY ADMINISTRATOR	Theresa Ray	07703 965 064	theresa.25016@hotmail.co.uk
CLEOBURY COUNTRY CENTRE		01299 272300	In Love Lane, 9 to 5 Mon to Fri.
CLEOBURY DENTAL PRACTICE		01299 271747	www.cleoburydental.co.uk
CLEOBURY CARERS	Michelle	01743 341995	carerssupport@shropshire.gov.uk
CLEOBURY COMPASSIONATE COMMUNITIES	Katja Jones	07966 080111	Tuesday and Thursday at the Medical Centre
CLEOBURY MORTIMER LIBRARY		01299 272301	Open 9 to 7 Mon, 9 to 5 Tues/Fri and 10 to 1 Sat.
LOCAL POLICE	PC Wayne Strangwood	07773 054 587	wayne.strangwood@westmercia.pnn.police.uk
CLEOBURY MORTIMER GUIDES	Fiona McCallum	07805 737 555	
CLEOBURY MORTIMER SCOUTS	Lowri Hughes		cleoburybeavers@gmail.com
CRIMESTOPPERS		0800 555 111	Free Police contact. Talk in confidence, to report any crime.
DOMESTIC VIOLENCE HELPLINE		0800 783 1359	Women's Aid, 24 Hour support:
HOME FROM HOSPITAL		01584 878046	Help over the first weeks back home from Age UK
MARKET HALL	Kim	01299 272732	markethall@cleobury.org.uk
MEDICAL CENTRE		01299 270209	Out of surgery hours, use the Shrop Doc Service.
SHROP DOC		111	Service available evenings and weekends
THE MEN'S SHED	Pete Blackburn	07776 243 584	petblack@me.com
THE PHARMACY		01299 270219	Closes for half day on Saturday. Delivers prescriptions
ST ELIZABETH'S CATHOLIC CHURCH	Angela Flowers	01299 270318	Sunday Mass at 9.00am
NIGHTINGALE NURSING FUND	Rosemary Abbiss	01746 718451	
TOWN COUNCIL	Clerk Matthew Sheehan	01299 271154	Cleobury Country Centre 9 to 2 pm, Mon to Fri. www.cleobury.org.uk . Council meets in the Centre on the first Monday of the month
POST OFFICE		01299 270211	In the Select and Save Grocery Store, Church Street
SAINT MARY'S YOUTH PROJECT	Mark Greaves	07828 116810	mark.stmarys@live.co.uk
SHROPSHIRE COUNCIL		0345 678 9000	
SOUTH SHROPSHIRE YOUTH FORUM		01584 874922	
VOLUNTARY CAR SCHEME		01299 666119	Mandy Smith
WASTE DISPOSAL		0345 678 9007	The contractor is Veolia
WATER SUPPLY EMERGENCIES	Severn Trent	0800 783 4444	
NEWLIFE CHURCH	Pastor E Stirrup	01562 630595	Sunday services at 10.30

Collect the Clarion in Cleobury from: Select and Save Grocery, Londis Store, Cleoburrs, Cleobury Cafe, The Severn Hospice Shop, Mid Counties Co-op, Purslows, and The Library.

Out in Cleobury Country at: Heath Farm Meats, **Bagginswood**; **Clee Hill Stores**; **Clows Top Stores**; The Sun and Slipper, **Mamble**; **Hopton Bank Service Station**; ; **Ludlow Library**; **Mahorall Cider Farm**; The Colliers Cafe & Shop, **Rock**; The Fighting Cocks, **Stottesdon**; The Duck Inn, **Chorley**; The Live and Let Live, **Neen Sollars**; The Eagle and Serpent, **Kinlet**; Parker Motors, **Ditton Priors**.

Copies are also available from the Parish Churches in: Cleobury Mortimer, Bayton, Doddington, Hopton Wafers, Milson, Neen Savage and Neen Sollars.

Missed your Clarion? Cleobury Mortimer Library keeps the current month's copy on file and all back issues are available to read as pdfs from www.cleoburyclarion.co.uk.

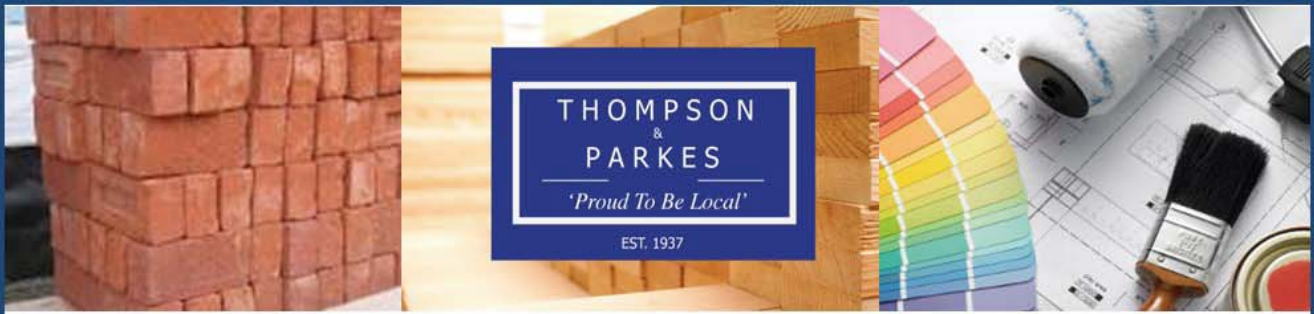
DEADLINE FOR THE OCTOBER ISSUE: SEPTEMBER 22nd. CONTRIBUTORS PLEASE NOTE THAT THIS IS THE LAST POSSIBLE DATE TO RECEIVE REPORTS.

Editor and Advertising Sales: Jim Reynolds, 4 Childe Road, Cleobury Mortimer, Shropshire DY14 8PA. Telephone: 01299 270642 Mobile: 07410 977 212

E-Mail: editor@cleoburyclarion.co.uk or uncle.jim@icloud.com

The Clarion On The Web: www.cleoburyclarion.co.uk

Printed by Badger Print and Design of Shifnal, 01952 730511



Your local specialist supplier of
Insulation, Timber, Plywood and all Building Materials

THOMPSON & PARKES

SANDSTONE - Best offer locally!

A natural product, Stoneplus Raj Indian sandstone has subtle tones and ideal for traditional patios.

15.25m² patio packs including 900 x 600, 600 x 600, 600 x 300 and 300 x 300 slabs

Just £24.50/m² - £373.63 +VAT per pack

While stocks last and available at all outlets!



Proud to be Local

www.thompsonandparkes.co.uk

Stocking and Delivering all Your Building and DIY Materials

Kidderminster 01562 745881
Oldington Trading Estate DY11 7QP

Oreton 01746 718414
Cleobury Mortimer DY14 0TH

Stourport 01299 534545
Minster Road DY13 8AB